

# Public Document Pack

**Cheviot**  
Area Partnership

**Our Scottish Borders**  
Your community

---

## MEETING

**Date:** Wednesday, 1 February 2023

**Time:** 6.30pm - 8.30 p.m.

**Location:** Via Microsoft Teams

AGENDA	
1.	<b>Welcome</b>
2.	<b>Feedback from the Meeting on 23 November 2022</b> (Pages 5 - 10) <ul style="list-style-type: none"><li>• Minute – Copy Minute from meeting held on 23 November 2022. (Copy attached.)</li><li>• Menti Feedback from meeting held on 23 November 2022</li></ul>
3.	<b>Section 1: Service &amp; Partner updates and consultations</b>
	(a) <b>Community Conversation Feedback</b> (Pages 11 - 22)
	(b) <b>Harry Whitmore - Community Led Housing Coordinator, South of Scotland Community Housing - SOSCH</b>
4.	<b>Section 2: Community Empowerment and Community Funding</b>
	(a) <b>Cheviot Funding Table 2022/23</b> (Pages 23 - 26)  Overview from SBC Communities & Partnership Team.
	(b) <b>Neighbourhood Support Fund</b> (Pages 27 - 32)  NSF recommendations to be presented by the Cheviot Assessment Panel on the following applications:- <ul style="list-style-type: none"><li>(i) Perfect Harmony</li><li>(ii) QME Care</li></ul>

	<ul style="list-style-type: none"> <li>(iii) Ancrum Community Council</li> <li>(iv) Jedburgh Community Council – Perennial Plants Project</li> <li>(v) KCC Walking Festival Committee</li> <li>(vi) Kelso Heritage Society</li> <li>(vii) Art at Ancrum</li> <li>(viii) Jedburgh Community Council – Railings around Playpark, Abbey Place</li> <li>(ix) Jedburgh Community Council – Painting of lampposts in Abbey Place</li> <li>(x) Kelso Camera Club</li> <li>(xi) Rural Space Agency</li> <li>(xii) St Boswells Primary School</li> <li>(xiii) Kelso Skatepark</li> <li>(xiv) Thomas Maconochie KHS Trust</li> </ul>
5.	<b>Section 3: Local Priorities</b>
	<p>(a) <b>Place Making</b> (Pages 33 - 62)</p> <p>Update on Place Making progress in Cheviot.</p>
	<p>(b) <b>Community Council Update</b></p> <p>Sharing good practice and current activity from across Cheviot.</p>
	<p>(c) <b>Cost of Living Update - SBC Communities &amp; Partnership Team</b></p>
6.	<b>Section 4: Other</b>
	<p>(a) <b>Additional Information Document</b> (Pages 63 - 66)</p>
	<p>(b) <b>Date of Next Meeting</b> Wednesday, 29 March 2023 – Venue to be confirmed</p>
	<p>(c) <b>Any Other Competent Business</b></p>
	<p>(d) <b>Meeting Evaluation</b></p>

Please direct any enquiries to Fiona Henderson Tel: 01835 826502  
E-mail: fhenderson@scotborders.gov.uk

---

MINUTES of Meeting of the CHEVIOT AREA PARTNERSHIP held in Kelso High School, Angraflat Road, Kelso on Wednesday, 23 November 2022 at 6.30 pm.

Present:- Councillors P. Brown, (Chairman), S. Hamilton, S. Mountford, E. Robson, S. Scott, T. Weatherston, together with 12 Representatives of Partner Organisations, Community Councils and Members of the Public.

Apologies:

In attendance: - Community Engagement Officer – Gillian Jardine, Democratic Services Officer (F. Henderson).

**1. WELCOME AND INTRODUCTIONS**

The Chairman welcomed everyone to the in person meeting, which included Elected Members, Community Council representatives, Community Organisations and guests attending within the meeting. She outlined how the meeting would be conducted.

**2. FEEDBACK FROM MEETINGS ON 28 SEPTEMBER 2022 AND 10 OCTOBER 2022**

The minutes of the meetings of the Cheviot Area Partnership held on 28 September 2022 and 10 October 2022 had been circulated with the Agenda.

**3. SECTION 1: SERVICE & PARTNER UPDATES AND CONSULTATIONS**

- 3.1 **Climate Change feedback and next steps:** The Community Engagement Officer thanked everyone who took part in the discussion. There were interesting comments raised around understanding the scale of the challenge and what everyone as a whole needed to do to reduce our carbon footprint. Interest was raised in how energy could be created from local rivers, how to increase solar panel usage and consider alternative energy and heating sources and how to encourage a decarbonisation strategy. In terms of next steps; SBC was working with delivery partners to provide home energy efficiency projects under the SG funded Area Based Schemes. If communities were interested in community renewable energy options, particularly hydro, SBC can signpost communities to Local Energy Scotland. SBC was collecting information on communities which were interested in developing projects with a view to organising a workshop with Local Energy Scotland. SBC was working with Scottish Communities Climate Action Network and local groups to potentially develop a local Climate Hub/Network to support behaviour change. SBC was also piloting a Demand Responsive Transport pilot in Berwickshire to look at ways of improving local transport services.

**DECISION NOTED.**

- 3.2 Information on Kalemouth Bridge had been circulated to the local community and was being circulated around the Area Partnership for information.
- 3.3 In response to a question raised at the last meeting concerning the rationale for the boundaries

of the Area Partnerships, it was advised that boundaries were based on the electoral boundaries rather than High School boundaries. [Democratic Services can expand on this if required].

3.4 The consultation report on the former Jedburgh Grammar School Site which had been mentioned at the last meeting was available on Citizenspace and had been shared with local groups.

3.5 In terms of the question raised on the Community Plan, the Community Planning Partnership's Community Plan was agreed in May 2018. In early September the Community Planning Strategic Board agreed a 12 month Work Plan along with a full review of the Community Plan in 2023-24.

#### 4.0 **Coast to Coast Cycle Route**

The Chairman welcomed Katy Jackson, Community Development Advisor, SOSE to report on the exciting new 250 mile on-road coast to coast cycle route covering the length of the South of Scotland which would be launched in summer 2023. The new product was aimed at experienced cyclists who feel comfortable cycling on road. The new Coast to Coast (\*working title) route would run from Stranraer to Eyemouth, making it one of the longest in the UK and a new discovery route for experienced cyclists. The route was expected to bring significant economic, environmental and community benefits to the South of Scotland but also contribute to the national economic performance. Early projections were that the new route could attract up to 175,000 new visitors to the region, with a direct spend of £13.7million per year. The project was aiming to be delivered in time for the 2023 UCI Cycling World Championships which would take place in August 2023 in venues across Scotland with 11 days of competition taking place in the Scottish Borders and Dumfries & Galloway. Three of the thirteen championship disciplines would take place in the South in August next year and by launching the route in advance of the Cycling World Championships, it was hoped to offer spectators and visitors a great cycling holiday experience to extend their stay and explore the very best of the region. The development of the route was being led by South of Scotland Enterprise who were using a TEAM South approach through the South of Scotland Cycling Partnership including Dumfries and Galloway and Scottish Borders councils, South of Scotland Destination Alliance, VisitScotland, Cycling Scotland and Sustrans Scotland. The route was aligned with the new South of Scotland Cycling Partnership Strategy which by 2032 aimed to deliver a new VISION that "our South of Scotland Communities are shaped around ALL of our people and cycling is the most popular choice for shorter, everyday journeys and embedded into the daily fabric of the lives of our residents and experiences of our visitors." The route would start in Stranraer and take a stunning journey through towns and hamlets finishing in Eyemouth. It would pass through the very best of the landscape, including Newton Stewart, Kirkcudbright, Dumfries, Langholm, Newcastleton, Hawick, Selkirk, Melrose and Coldstream. Ms Jackson went onto to highlight the importance of using local knowledge as they moved into phase one of a 3 phase project. Disappointment was expressed that the route did not include Jedburgh and potential links to attractions in the Borders be considered. Questions were raised as to how success would be measured and links to what was on offer in the Borders were highlighted to encourage detours of the route.

**DECISION  
NOTED.**

5.0 **SECTION 2: Community Empowerment and Community Funding**

5.1. **Cheviot Funding Tables 2022/23**

There had been circulated copies of the Cheviot Funding for 2022/2023 which detailed the funding available together with information on the allocation of the Community Grant Fund in 2022/23. The opening balance at 1 April 2022 was £80,268.39 plus underspend from the Community Fund in 2021/22 of £28,640.65 and underspend in the Local Festival Grant in 2021/22 of £2,953.00, which resulted in an overall budget of £111,862.04. Neighbourhood Support Fund applications awarded to date totalled £23,980.43. Other sources of funding included Local Festival Grant Budget totalling £16,675.00, Annual Support Grant to Community Councils totalling £10,470.00, Common Goods, SBC Enhancement Grant, SBC Welfare Grant and SBC Small Schemes totalled £196,676.17.

**DECISION  
NOTED.**

5.2 There had been circulated copies of a report which detailed the recommendations of the Cheviot Community Fund Assessment Panel. The report provided a brief description of each application received and a recommendation on the sum to be awarded to each project.

5.3 **Kelso Cricket Club**

An application had been received from Kelso Cricket Club requesting £2,160 was received for the purchase of a marquee to replace the old marquee which had been destroyed in high winds and storms. The marquee was used for hosting events which helped raise funds for the club. The Panel were supportive of the project and recommended that £2,160 be awarded.

5.4 **Kelso in Bloom**

An application had been received from Kelso in Bloom requesting £2,500 to purchase perennials and shrubs to provide an alternative and more financially sustainable planting scheme for Kelso. The perennials and shrubs would be used to enhance the entrance to Kelso from Sprouston by developing the beds in front of the Linn. The Panel were supportive of the project and recommended that £2,500 be awarded.

5.5 **Sprouston Coronation Hall**

An application had been received from Sprouston Coronation Hall requesting £2,101.75 to fund the installation of a switch rated at 100amps to provide a connection to a generator in the hall to create a safe refuge for members of the village in the event of another major power outage. The Panel were supportive and were of the opinion that this would enhance the village's provision as a rural community and was a good example of the community being proactive. Recent experiences had shown the vulnerability of communities for different reasons.

**DECISION**

**AGREED that the following sums be awarded to each of those listed:-**

- **Kelso Cricket Club - £2,160**
- **Kelso in Bloom - £2,500**
- **Sprouston Coronation Hall - £2,101.75**

5.6 There had been circulated copies of a report from the Cheviot Assessment Panel who were seeking to increase the maximum grant to £5,000 (currently the maximum grant was £2,500). The Panel were of the opinion that raising the limit to £5,000 would encourage

more groups and organisations to apply and support local groups/organisations to deliver projects/initiatives. All other Localities had an application limit of £5,000 or above and were on course to spend their Neighbourhood Support Fund before the end of the financial year. Assuming the current applications to the Cheviot Neighbourhood Support Fund were approved it would leave a balance of £92,652.33 to spend before the end of March 2023 and based on the number of applications received for the year, it was highly unlikely that would be achieved.

- 5.7 The Assessment Panel were also requesting to remove the restriction that groups could only submit two applications per annum and that they must be for different Groups as this was particularly challenging for Community Councils who were often the main body for organising and delivering community projects in their area. The panel believed the scrutiny of applications applied at the assessment stage would consider the merit and worth of all community projects and therefore the limitation on the number of times a group can apply was not required.

**DECISION  
AGREED:-**

- (a) **to increase the maximum payable per grant to £5,000 for the remainder of 2022/23 Financial year and then review; and**
- (b) **to remove the restriction on the number of times a Group could apply for funding.**

6.0 **Kelso Skate Park Floodlighting**

Louise Rawlings from CLD and two high school pupils who were working on a project to secure floodlighting for the skate park, attended the Area Partnership to give the young people experience of a public meeting as they would be meeting the Community Council and speaking with community residents in the coming months. There were no actions to agree.

**DECISION  
NOTED.**

7.0 **POLICE SCOTLAND UPDATE**

Sergeant Ali Grainger was present and explained that the Police Community Officers were hoping to make contact with the small Community Councils and develop a working relationship.

Community Officers were:- Gary Chisholm (Jedburgh)  
Kirsty Chisholm (Kelso)  
Paul Owenson (Kelso)

8.0 **SECTION 4: Other**

8.1 **ADDITIONAL INFORMATION DOCUMENT**

The Chairman advised that additional information was included in the agenda pack which contained information on current consultations and links to useful information.

**DECISION  
NOTED.**

9.0 **DATE OF FUTURE MEETINGS**

Future Meetings of the Cheviot Area Partnership would be held on the following dates:

Wednesday, 29 March 2023

Wednesday, 31 May 2023

The next meeting would be held on **Wednesday, 1 February 2023 at 6.30 p.m. via Microsoft Teams.**

10.0 **MEETING EVALUATION**

Ms Jardine reminded those present about the meeting evaluation form which could be accessed via the link <https://forms.office.com/r/HHH1dEcmz3>. She added that feedback about the Area Partnership meetings was really helpful and always appreciated.

*The meeting closed at 7.45 p.m.*

This page is intentionally left blank



No. in attendance: 15

Overall summary of Issues	
Positive Feedback from the event indicated the Council is clearly trying to develop the Place Making agenda. The work being undertaken on climate change is welcomed as is the attempt to engage with communities through these sessions and address the challenges they face.	
There are however a number of challenging issues raised as part of the community conservation in Hawick and Denholm Ward. A number of these are thought to be opinions expressed for which no specific action is required e.g. SOSE not forgetting its commitment to projects, or isolated fault issues e.g. street lighting during the day. There are also a number of issues which are subjective individual perceptions e.g. Denholm school a mess.	

You said	We Propose To
----------	---------------

Social Work under stress	A review of the capacity of Social Work to support communities is underway. New information systems are being implemented to provide better information management re case load. Programmes are in place to grow our own social workers, 5 recently qualified and new intake are in training. Front line staff are being empowered with hand held technology to reduce admin burden.
Planning permission required to change colour of door as in conservation area	The Chief Planning Officer will undertake a review of planning policy with respect to conservation areas
Drivers not adhering to 20 mph speed limit in Denholm	The Council is currently consulting on the future pilot arrangements re 20mph. The scheme has recently won a national road safety award and there has been a significant reduction in accidents of around 34% since the introduction of the scheme.
Street sweepers in Denholm once in a blue moon	The Council will review the adequacy of street sweeping arrangements and publish the frequency of road sweeping.
Weeds on paths	To raise awareness of policy re. weed spraying which is costly and damaging to the environment. Community groups to be assisted with grants to buy tools to help with weed control.
Send biggest bin lorry to streets built in mid 40s	Council will review vehicles on routes to ensure they are appropriate to the physical layout of streets. It may be however, that a replacement vehicle was deployed due to the breakdown of a regular collection vehicle
Potholes	Council has purchased a pot master pro and is looking to source another. Three jet patchers are now active on the network. The council will publish its planned roads maintenance programme in the future highlighting to the community when maintenance is planned.
Hawick Youth Rugby & Lindean - in Feb John Curry/Mark Rowley met at the pitch at new high school. SRU have a time limited grant of 50k time of which there is two and half years left. Volunteer park previously raised.	There are issues with the pitch at the volunteer park and the stand will be examined as part of the Hawick High School Replacement project.
Application to buy a bike shed on Denholm primary school car park by the community hall (reg charity and SCIO) still not resolved after 4 years. When will it be finalised? Funding coming from non SBC sources.	A review of the efficiency of the community asset transfer policy is to be undertaken
Access: transportation - linkage on the pathway system from Denholm to Hawick. Clear need to link Denholm in to the active travel network. Public transport inadequate. No bus after 6pm in the evening. There is an existing pathway but 1 mile is on the road (Hassendean Bank) comes out at the CRC	Council is developing its strategy re. path networks and seeking to encourage active travel and healthy lifestyles. The Hawick active travel network was funded by Sustrans and they and SOSE will be engaged to assess the potential for extending the scheme to Denholm, subject to funding.
Building Control - In recognising the difficulties that the construction industry continue to experience, why are building control so rigid in their enforcement of deadlines. Need for more flexibility in timelines. Discussion to be had re making this easier for construction professionals. No flexibility. Pressure on everyone.	Review of approach to development deadlines.
Ability to access applications, online and comment via a link has died. Now a Word document attached to an email is required. When a Word doc is submitted there is no guarantee that the doc is available to those viewing. Consultees lose certainty, why was this necessary.	Review of approach to the way in which the community council can access the planning portal and comment on individual applications
Denholm CC - has happened coincidental with Covid, the CC previously always informed via email and letter when a planning application was submitted to permit comment. CC no longer seem to be notified, expected to access weekly list to find applications. CC should have an automatic notification, can this be looked at? List has to be opened - is it not spendable?	The reinstatement of the previous system whereby the community were notified of a planning application to be explored
Live Borders no provision for secondary age pupils.	Review of sports and activity strategy to be undertaken with Live Borders.

No. in attendance: 14

## Overall summary of Issues

General issues of town maintenance, roads, public toilets, parking, Saltgreens - meals, Safe Place scheme, old Eyemouth High School, need for affordable housing

You said	We Propose To
General maintenance around swimming pool, bottle banks, bins, pilot "big belly bins". Make waste bins seagull proof. There are weeds everywhere, footpaths overgrown, inadequate lighting at Deanhead Drive and Road	We are currently reviewing the approach we are taking to neighbourhood management. Each ward area has a small schemes budget which can be used to address issues such as benches, painting railings etc. The Council is trying to develop new approaches to neighbourhood maintenance recognising SBC cannot (regrettably) do everything we would like to and there is huge untapped capacity in localities for volunteers etc. to help with the general upkeep of neighbourhoods. We want to develop a new approach to community engagement and involvement and explore ways in which we can help local people to improve their environment through grants, advice and assistance. The suggestions re new types of bins that are gull proof will be looked at.
Roads - some need resurfacing, Home Arms car park, whole length at back of Murrayfield needs tarmac. Lack of drop down kerbs	We are currently developing a new approach to roads maintenance which allows communities to determine planned road maintenance priorities in their areas. The Council now has 3 jet patchers and one pot master pro active on the road network filling in pot holes but it is recognised more needs to be done to address larger sections of roads which require resurfacing.
Warner Park - nets and fencing needs repaired, parking issues	We are currently reviewing the approach we are taking to neighbourhood management. Each ward area has a small schemes budget which can be used to address issues such as benches, railing etc. The Council is trying to develop new approaches to neighbourhood maintenance recognising SBC cannot regrettably do everything and there is huge untapped capacity in localities for volunteers to help with the general upkeep of neighbourhoods. We want to develop a new approach to community engagement and involvement and explore ways in which we can help local people to improve their environment through grants, advice and assistance.
Food supply at Saltgreens	The Council wants to ensure residents in all our care homes have access to the best quality food and continually review the quality and affordability of products provided by our suppliers. A recent pilot arrangement in schools using local supplier to provide butcher meat has proved to be very successful and we are looking at ways in which this approach can be rolled out.
Safe place scheme - not just for LD cases	We are in agreement for the need of safe places and we are exploring how we can become part of the Safe Place Scheme.
No public toilets at Reston car park	We have delivered multi million pound upgrades to parks in a number of our communities in recent years. If a park for Reston is a priority then this should be raised via local councillors so that it can be added to the list of future schemes that may be undertaken.
More money should be spent on tourism in Berwickshire	We would love to spend more money on tourism, regrettably this has to be prioritised against other issues. There is a community fund and a Coastal maritime fund which may be able to provide some support. We are also engaging with SOSE and the Gunsgreen house trust to look at investment requirements at Eyemouth harbour.
Eyemouth HS - what is happening with old High School and play park and tennis courts	A plan for the redevelopment of the old High school site is being prepared by Council officers and will be subject to future community consultation.
Toilets in Eyemouth in poor condition	A report on the future provision of toilets is being developed for consideration by members. This may involve rationalising the number of public toilets we have across the region. We have too many and cannot afford to operate and upgrade them all. This is a non statutory service and we need to prioritise where we can invest and sustain services. In the future we may have fewer but better facilities.
Social enterprise - gluten free bakery at risk of losing grant, needs a property	This issue has been resolved and the bakery is now occupying alternative premises.
Allanton - 20mph - concerns over speeding, parking on pavements, school bus safety. Speed on New Harbour road Eyemouth	The Council has introduced a trial 20mph speed limit scheme in many communities and is currently consulting on the future of this scheme. If there is a desire to see more roads included as part of this scheme then this could be looked at, subject to the outcome of the consultation.
Continued partnership with Harbour Trust	The Council has an excellent relationship with the Harbour trust and supports their ongoing activities both financially and in kind. We wish to see this relationship develop in future, building on the success of the EDF investment in the harbour and the expansion of the marine servicing base.
Number of holiday lets stopping local residents finding affordable housing	The Council is working with local RSL partners through the Strategic Housing Improvement Plan to enhance the number of local affordable houses. We recognise this is a major issue for local people. We can use use powers under council tax legislation to levy an additional tax on second homes, however is a private decision for individuals if they wish to own and let out a second home in an area. We will discuss this further with Scottish Government to see if there are ways we could acquire more homes for public ownership when they come onto the open market.
Healthcare provision, GPs and dentists - not good	Not a responsibility of SBC. Will be raised with NHS Borders and the IJB.

No. in attendance: 15

Overall summary of Issues
Main topic was the new Campus, plus general issues of buses, maintenance, Gala Resource Centre, dialogue with community, working conditions for teachers, Burgh Yard, Mountain Bike trails, cheap rents for students, college graduates, history of area

You said	We Propose To
Why are bus timetables no longer in print	Online access to bus timetables is considered to be more environmentally friendly and easier to update
General maintenance and upkeep of Galashiels; Volunteer Hall signage, bins in Lintburn street, rubbish lying on Channel Street, weeds everywhere, general poor standard of cleanliness and poor upkeep of cemeteries	We are currently reviewing the approach we are taking to neighbourhood management. Each ward area has a small schemes budget, which can be used to address issues such as benches, painting railings etc. The Council is trying to develop new approaches to neighbourhood maintenance recognising SBC cannot (regrettably) do everything we would like to and there is huge untapped capacity in localities for volunteers etc. to help with the general upkeep of neighbourhoods. We want to develop a new approach to community engagement and involvement and explore ways in which we can help local people to improve their environment through grants, advice and assistance.
Status of Gala Resource Centre	The building is not currently in use and we are awaiting for the building to be transferred to Estates. This will then be available for any interested parties.
More dialogue with community in regards to what projects are happening/on-going	Agreed. The council is currently considering ways in which we can engage, inform and consult with communities more effectively
New Academy - campus	The Council is progressing the delivery of the new campus as quickly as possible using Hub South East . Planning permission for the new facility is now in place and the project is progressing. We believe the proposed location of the school within Scott Park provides the optimum solution which will allow the building to be constructed with minimum impact on the delivery of the curriculum.
Improve working conditions for teachers	The working conditions for teachers are regularly discussed in meetings between the council and the trades union to ensure all workers have the best possible terms and conditions and the best possible working environment
Would like the Council to lead the green agenda	The council is doing everything it can to reduce our carbon footprint; green council fleet, reducing our energy consumption and encouraging bio diversity. We have declared a climate emergency and are actively pursuing a net zero agenda for 2045.
Mountain bike trails for Galashiels	Active cycling network throughout the Borders including Gala is being developed using a network of multi use paths. The Council's ambition is for the Borders to develop its status as a top destination of cycling and mountain biking. The region will host the Enduro World mountain biking championships in 2023 and the council is one of the sponsors of the event.
Cheap rents and grants to keep college graduates in area	This is not something, regrettably, that current resources will allow. The council is however a living wage employer and encourages all its partners and suppliers to also sign up to the scheme.
Recording history of area, re-use old buildings	The council is working with SOSE to undertake the development of place plans which will examine a range of issues facing communities including the need to regenerate high streets, improve the appearance of the public realm and adopt a more interventionist approach to dealing with problem buildings. The first 4 sessions are planned for Hawick, Galashiels, Jedburgh and Eyemouth in November and it is proposed that more sessions, including Selkirk will follow.

No. in attendance: 12

Overall summary of Issues
Main issues were CARS, Teviot Wind Farm, Eskdale Muir Rifle Range, general maintenance, roads etc., issues re money to town

You said	We Propose To
Roads - cold tar filling, idling vehicles - emissions	The council recognise that the use of cold tar is problematic and we only use this for emergency pothole repairs. We are currently developing a new approach to roads maintenance which allows communities to determine planned road maintenance priorities in their areas. The Council now has 3 jet patchers and one pot master pro active on the road network filling in pot holes but it is recognised more needs to be done to address larger sections of roads which require re surfacing.
McDonalds - bringing more rubbish	Noted. This could only be solved by people changing their behaviour and attitude to litter.
CARS is a façade, prohibitive costs	The Council believe that the CARS scheme provide a valuable boost to the appearance of town centres and the scheme that have been delivered to date have provided significant benefits for communities.
Use 3D to show what new HS may look like	Thank you this will be explored
Teviot wind farm	These issues will be addressed with planning colleagues.
Biodiversity issues in the Borders	The Council has declared a climate emergency and is encouraging wild flowers and bio diversity through reprioritising its grass cutting regime. This is not proving popular with all sections of the community The Biodiversity of environments along the Tweed has been the subject of action following council reports and the use of weed killer and salt is being managed more carefully.
Eskdale Muir rifle range	These issues will be addressed with planning colleagues.
Impact of walls for flooding, maintenance	The flood protection scheme will provide 1 in 75 flood protection to the town and protect over 900 properties for the blight of flooding. The scheme is being delivered to a very high standard of design and finish.
Community hospital - 7 gardens - friends maintain	Community hospitals are operated by NHS Borders
General maintenance - weeds, cemeteries, gaps in pavements, litter bins in laybys never emptied, lack of dog poo and litter bins at Acre Know	We are currently reviewing the approach we are taking to neighbourhood management. Each ward area has a small schemes budget which can be used to address issues such as benches, railing etc. The Council is trying to develop new approaches to neighbourhood maintenance recognising SBC cannot regrettably do everything and there is huge untapped capacity in localities for volunteers etc. to help with the general upkeep of neighbourhoods. We want to develop a new approach to community engagement and involvement and explore ways in which we can help local people to improve their environment through grants, advice and assistance.

No. in attendance: 10

Overall summary of Issues
There was only one attendee, Provost Gavin Horsburgh who raised various issues from maintenance, Gypsy Travellers, Public toilets, bus shelter, Maxmill Park, council systems, community and taxi transport

You said	We Propose To
Glebe Wall Bridge Street, owned by Church of Scotland, can CoS give third of land for car parking	Need to explore this with the Church of Scotland. Maybe something the community council could discuss with the Church.
General maintenance issues, install lighting to footpath between Bridge St and Mayfield Gdn Centre, no precinct sweeper in Kelso	We are currently reviewing the approach we are taking to neighbourhood management. Each ward area has a small schemes budget which can be used to address issues such as benches, railing etc. The council is trying to develop new approaches to neighbourhood maintenance recognising SBC cannot regrettably do everything and there is huge untapped capacity in localities for volunteers etc. to help with the general upkeep of neighbourhoods. We want to develop a new approach to community engagement and involvement and explore ways in which we can help local people to improve their environment through grants, advice and assistance. The issue of the precinct sweeper in Kelso will be looked at.
Prevent Gypsy travellers camping in Kelso	Gypsy travellers are a recognised equalities group and SBC cannot take legal steps to prevent people camping in Kelso. Where any illegal traveller encampments occur on council owned land we will take steps to ensure their duration is minimised. The council has no legal powers to evict Gypsy travellers from private land but can provide advice to landowners.
Public toilets, provide tap and go access	In line with many areas across the UK, the council is having to charge for this non statutory service; however, the development of cashless tap and go facility can be looked at. The initial capital outlay and complexity of providing wi-fi connected cashless infrastructure across the Borders may prove to be ineffective in cost terms given take up and other logistical challenges.
Home to school transport	The logistics of providing home to school transport across such a large area in the Scottish Borders are significantly challenging and complex. Nevertheless, we are keen to hear of ways in which this could be improved and would suggest this be the subject of further review.
Bus shelter in town a poor environment, buses mounting kerbs	The council is keen to examine ways in which rural transport can be boosted. Perhaps this is something the community council could take forward in partnership with SBC?
Potential purchaser of the Maxmill site (owner of the old gasworks on Sprouston Road/ Station Road. This is currently temporary/ homelessness accommodation to support homelessness services and now the Ukraine crisis. Willing to pay the DV value	This will be subject to further investigation
Community and Taxi transport does not seem joined up particularly in supporting patients travelling to and from BGH.	The council recognises the importance of transport connectivity to rural communities in particular in accessing employment, education and health appointments. Regrettably given the geography of the Borders and the significant travel distances involved, transport is a huge issue. We are piloting a rural demand responsive transport service in Berwickshire which is providing encouraging early feedback, but any ideas as to how transport services could be improved for the Cheviot area and Kelso would be welcome.
Council systems can be laborious for members of the community. CC tends to get information manually by secretary, planning portal and social media.	Thank you for the feedback. We are trying to develop more immediate forms of information dissemination including Twitter, Facebook, yammer and via the council's website. Any ideas you have in terms of how we could communicate more effectively will be gratefully considered.

**LEADERDALE AND MELROSE ISSUES 14/7/2022**

No. in attendance:

5

Overall summary of Issues

Road conditions, better interaction with CC's, cemeteries, Council phone system

You said	We Propose To
Road conditions - potholes and white lining, roads narrow due to lack of verge cleaning	We are currently reviewing the approach we are taking to neighbourhood management. Each ward area has a small schemes budget which can be used to address issues such as benches, painting railings etc. The Council is trying to develop new approaches to neighbourhood maintenance recognising SBC cannot (regrettably) do everything we would like to and there is huge untapped capacity in localities for volunteers etc. to help with the general upkeep of neighbourhoods. We want to develop a new approach to community engagement and involvement and explore ways in which we can help local people to improve their environment through grants, advice and assistance.
Want to see better interaction with CC's	We agree and the council will explore how we can engage more effectively with community councils.
cemetery conditions	This is a significant issue for many people and we are currently reviewing the approach to cemetery maintenance and grave stones in cemeteries that are still being used.
Council phone system - being cut off after being on hold for 30 mins - told will get a call back but never does	We recognise this is currently a problem. Many people are frustrated by problems accessing council services using the 0300 number. We are urgently looking at ways in which this can be improved including ways of accessing council services using the councils website are being developed. The capacity of systems underpinning the 0300 number is a known problem which is being addressed with CGI.

No. in attendance: 6

Overall summary of Issues
Reston station, platform at Berwick station, roads, CC's, signage

You said	We Propose To
Reston Station - inconsistent train timings, to and from Reston to Edinburgh. Platform gap north end of Berwick Station.	This is not an issue where the council has any direct locus. The council leader has recently written to Scottish Ministers expressing frustration and concern at the lack of a Scotrail operated service to the new station.
approaching Duns from Berwick, roads - resurfaced but not renewed all white lining	This will be prioritised within the white lining programme and addressed as quickly as possible.
Community Council working group - how to see what other CC's are doing	This is an issue that community councils could seek to resolve
Signs for the original caravan site on the green still in place in Coldstream	This will be looked at to remove the sign asap.

No. in attendance: 10

Overall summary of Issues
David Deacon emailed a list of issues but didn't approach anyone at the meeting. Main concerns were general maintenance, ECH needed for LD, Roads, council 0300 number, re-generation of high street and old Sainsbury's building, gypsy travellers, CAT Team, closure of banks and ATM's, new school - will it be a campus.

You said	We Propose To
General issues, garden waste collections, no pavement sweeper, maintenance of cycle paths, state of pavements in town, Salt bins - lid missing, cemeteries, state of kingsland avenue, Pringle park - dog mess and grass, choked drains, stones down in cemeteries,	We are currently reviewing the approach we are taking to neighbourhood management. Each ward area has a small schemes budget which can be used to address issues such as benches, railing etc. The council is trying to develop new approaches to neighbourhood maintenance recognising SBC cannot regrettably do everything and there is huge untapped capacity in localities for volunteers etc. to help with the general upkeep of neighbourhoods. We want to develop a new approach to community engagement and involvement and explore ways in which we can help local people to improve their environment through grants, advice and assistance.
ECH housing needed for LD	The council is exploring the development of new facilities for LD clients with Cornerstone, trying to replicate the facility the currently operate in the West of Scotland.
General road issues; one way system Yarrow Terrace & Buccleuch Road, speed limits, 20 mph limit. Provision of a taxi rank? Not enough parking	These issues will be passed on to the roads team to address. A consultation over the 20mph limit is currently underway.
Council 0300 number, difficulty getting right person	Ways of accessing council services using the councils website are being developed. The capacity of systems underpinning the 0300 number is a known problem which is being addressed with CGI.
Re-generation of high street; need an affordable supermarket and housing	The council is working with South Of Scotland Enterprise (SoSE) to undertake the development of place plans which will examine a range of issues facing communities including the need to regenerate high streets, improve the appearance of the public realm and adopt a more interventionist approach to dealing with problem buildings. The first 4 sessions are planned for Hawick, Galashiels, Jedburgh and Eyemouth and it is proposed that more sessions, including Selkirk will follow.
Gypsy Travellers	The council is trying to look at ways in which the needs of the travelling community can be better met in the Borders and a report is coming to council on this issue in November/ December. It is recognised the caravan site at Victoria Park is not the best location for services for travellers and alternative arrangements need to be planned and provided. The site is operated by Live Borders and was made available to travellers during COVID lockdown in response to COVID legislation. There are no plans to compensate local businesses, this would not be an appropriate response to the way in which this equalities group have been accommodated.
CAT Team	A review of the CAT team is currently underway. The council currently funds 14 police officer in the Borders to address issues of community concern.
Selkirk High School - will new school be a campus, any proposed location	There are currently no plans to replace Selkirk High School. The council is currently replacing Galashiels and Peebles High schools assisted by Scottish Government Funding. The replacement of Hawick High school is also being planned and Selkirk will require the identification of additional resource. If proposals emerge they will be the subject on extensive community consultation.
Closure of Banks, ATM's	This is a commercialisation for the banking sector and reflects the move to online banking and cashless transactions. While the council can express concern we have no powers to legislate in this area.



## Overall summary of Issues

Concerns re prescriptions, venues for workshops for art groups etc., CAT team, public toilets, roads, Puffin Crossing, cyclists, need housing for locals - being bought for Air BnBs, Council contact system, affordable office space, Walkerburn village hall, should swimming be mandatory

You said	We Propose To
Concerns about length of time to get prescriptions at Chemists, Haylodge HC	This is not an issue that is within the remit of the council. Suggest this be raised directly with the NHS Borders by the community.
Opps to support art groups, venues for workshops, use of St Ronans Well Centre	Such opportunities will have to be developed by the community themselves but may be eligible for a community grant.
CAT Team, breakdown in relationship with CC's	The ongoing provision of the CAT team is currently under review and will be considered to be part of the budget process for 23/24.
Public toilets - not enough in Innerleithen	The council is struggling with available resources to maintain all services and a number of non statutory service such as toilets in some communities are currently closed. We need to prioritise the facilities we can sustain and invest in improving the condition of fewer remaining facilities. A strategy on public toilet provision is being developed and will be brought to Council shortly
Roads - Nursery park road conditions, lack of EV Chargers, parking, Puffin Crossing	The council is developing a new strategy of community enablement so that we can assist communities to undertake more of these types of activities and improvements themselves using the community grants scheme. We want to help communities with start up grants, equipment and expertise to improve the appearance of local areas. The council does not have the resources to fund all the infrastructure required or desired by communities and the roll out of EV charging points must involve the private sector and an understanding that this infrastructure will be on pay to use basis. A strategy is coming forward to council to develop the Regions' approach to EV charging.
Concerns re cyclists on road, more could be done on safety	Agreed and with limited resources the council must prioritise its investment in the road network. Safety of cyclists is a priority and the councils' investing through Borderlands and other funding in active travel networks, multi use paths and road safety measures e.g. the 20mph zones to assist with the safety of cyclists.
Council contact system	The council is actively working to address the current performance of the council contact system including the number of dropped calls
Affordable office space	The council is currently considering how we can work with SOSE to improve the stock of small units and offices for start up businesses and on going activity throughout the region.
Village hall in Walkerburn struggling financially	A number of village halls are struggling financially and we need to consider in the current climate whether the total number of halls can be sustained in communities or whether building based service need to be rationalised e.g. into the local school.
Area partnerships need to change	Agreed. This needs further discussion with communities.
Should swimming lessons be mandatory	The Director of Education is actively considering whether swimming lessons should be provided to pupils in all borders schools. There are significant logistical implications concerning teaching time, tavel and pool availbaility to be considered and addressed.

TUESDAY 12TH JULY - TWEEDDALE WEST

No. in attendance:

8

Overall summary of Issues

The main concern raised was the Bus Service 101/102, community willing to host Ukraine's, volunteers interested in helping with maintenance of cemeteries etc., roads, Graham Inst

You said	We Propose To
Bus Service 101/102, not enough seats on buses	This is the subject of an ongoing process to sustain service 101/102. Funding partners have agreed to fund the service to the 31st March and discussions with the community over the future service delivery model are currently underway.
Good waste collection service, recycling guidance	Very useful feedback thank you.
Hosting Ukraine's - many willing to host	There is a comprehensive process in place to assist Ukrainian refugees arriving in Scotland coordinated by the Director of Social Work and under the guidance of the Scottish Government. The contribution of individuals and communities to the vital relief effort is greatly appreciated. It is up to village groups to work together if they feel there are better ways of coordinating local support activities. Information is available on the Council Website or by contacting the relief team
Volunteers interested in helping with grass cutting, care of cemetery, war memorial - resilient communities, work closer with Community Councils, devolved budget	The Council is developing a new strategy of community enablement so that we can assist communities to undertake more of these types of activities themselves using the community grants scheme. We want to help communities with start up grants, equipment and expertise to improve the appearance of local areas.
Roads - potholes, 20 mph speed limit, EV Chargers, parking at Drummond Knows	The Council is developing an approach to planned roads maintenance whereby communities will be consulted over priority road repairs in their areas. The 20mph trial is currently the subject of an ongoing public consultation and the results of this will be reported to Council before a final decision is taken.
Start up business units	The Council is currently considering how we can work with SOSE to improve the stock of small units and offices for start up businesses and ongoing activity throughout the region.
EV Charges	The council does not have the resources to fund all the infrastructure required or desired by communities and the roll out of EV charging points must involve the private sector and an understanding that this infrastructure will be on pay to use basis. A strategy is coming forward to Council to develop the Regions' approach to EV charging.

**JEDBURGH AND DISTRICT ISSUES 9/8/2022**

No. in attendance: 11

Overall summary of Issues
The main issues in Jed were consultation for old high school bldgs, scaffolding, library in campus, bus service 51, general maintenance, sea gulls, Live Borders charges, info re staff working at home, ground near St Johns church

You said	We Propose To
Standard of maintenance, lack of dialogue with communities, SBC ownership doesn't allow volunteers, vandalism to benches, grass cutting, foot paths not maintained	We are currently reviewing the approach we are taking to neighbourhood management. Each ward area has a small schemes budget which can be used to address issues such as benches, painting railings etc. The council is trying to develop new approaches to neighbourhood maintenance recognising SBC cannot (regrettably) do everything we would like to and there is huge untapped capacity in localities for volunteers etc. to help with the general upkeep of neighbourhoods. We want to develop a new approach to community engagement and involvement and explore ways in which we can help local people to improve their environment through grants, advice and assistance.
Development of Old Grammar school buildings/site	Plans are being developed for the old grammar school site
Concerns re scaffolding	The redevelopment of the unsafe building at exchange square is progressing and scaffolding will be removed shortly
Live Borders charging too much for use of buildings	The charging for sport and leisure facility access is currently being examined to ensure prices are sustainable, fair and consistent across the council's estate.
Seagulls are becoming a concern	Gull nuisance is a problem in many communities. The Council will explore the potential for introducing gull proof bins and the public can assist by using gull proof food waste recycling receptacles, where these are provided and by not putting out rubbish which will attract gulls and other animals.
Jedburgh not mentioned on Scotrail advertising in Tweedbank	This is perhaps an issue the community council could raise directly with Scotrail.
Library in new campus - not accessible for all	We are speaking to community representatives about a community run facility in the town centre
Medical centre - issues getting in to centre, is centre closing	This is an issue for NHS Borders
Jedburgh Trust - swimming pool expanding	The council is currently looking at ways in which it can support the Jed Leisure Trust along with Live Borders and BREST. All three organisations are finding the current operating environment with increased fuel costs and reduced footfall very difficult. A report setting out a proposed support package will be brought to the council for approval in December following discussion
Lots of empty shops	The council is working with SOSE to undertake the development of place plans which will examine a range of issues facing communities including the need to regenerate high streets, improve the appearance of the public realm and adopt a more interventionist approach to dealing with problem buildings. The first 4 sessions are planned for Hawick, Galashiels, Jedburgh and Eyemouth in November and it is proposed that more sessions will follow
Council offices at the Council buildings, would like to see report on effectiveness of working from home, outputs, appraisals, as a taxpayer.	The council is keeping this under review. Working from home has significant benefits for staff and the environment through reduced travel to work journeys etc.

This page is intentionally left blank

## Cheviot Funding 2022/23 01 February 2023

Neighbourhood Support Fund (NSF) 2022/23	
	£
Opening balance as of 01/04/2022	80,268.39
Plus Community Fund Underspend 2021/22	28,640.65
Plus Local Festival Grant Underspend 2021/22	2,953.00
Plus Community Fund 2019/20 underspend	£2,175
<b>Total available</b>	<b>£ 114,037.04</b>
<b>Less:</b>	
NSF applications awarded since 01/04/2022	£ 19,209.71
NSF applications that are assessed and await decision	£ 28,237.56
Sub-total	£ 47,447.27
<b>Funds remaining if assessed applications are successful</b>	<b>£ 66,589.77</b>
NSF applications still to be assessed	-
<b>Potential Overall Position</b>	<b>£ 66,589.77</b>

Other sources of grant funding - Cheviot			
Grant Type	Available	Awarded	Remaining
Local Festival Grants	£ 16,675.00	£ 13,000.00	£ 3,675.00
Annual Support Grants (Community Councils)	£ 11,100.00	£ 7,410.00	£ 3,690.00
Village Halls (inc. Secretariat fee paid to the Bridge)	£ 9,140.00	£ 9,140.00	-
SBC Small Schemes	£ 69,400.00	£ 60,100.00	£ 9,300.00
Common Good (Jedburgh)	£ 85,000.00	£ 79,500.00	£ 5,500.00
Common Good - Kelso	£ 3,000.00	£ 650.00	£ 2,350.00
SBC Enhancement Trust	£ 121.66	-	£ 121.66
SBC Welfare Trust	£ 3,446.03	-	£ 3,446.03
<b>Totals</b>	<b>£ 197,882.69</b>	<b>£ 169,800.00</b>	<b>£ 28,082.69</b>

Summary of applications						
No.	Date	Fund	Organisation Name	Amount	Project	Status
1	07/01/22	NSF	Abundant Borders	£ 2,492.00	Community Garden	Awarded
2	07/01/22	NSF	QME Care	£ 1,745.72	Bicycle Store	Unsuccessful
3	25/07/22	NSF	Roxburgh and Berwickshire CAB	£ 2,500.00	Advisor post	Withdrawn
4	27/07/22	NSF	Kelso Scout Group	£ 2,500.00	Purchase tents	Awarded
5	01/08/22	NSF	Stable Life	£ 2,500.00	Core costs	Awarded
6	17/08/22	NSF	Ancrum & District Heritage Society	£ 2,500.00	Display Boards	Awarded
7	22/08/22	NSF	Jedburgh Tourism Alliance	£ 1,975.00	web development	Awarded
8	25/09/2022	NSF	Kelso Community Council	£ 480.96	IT equipment	Awarded
9	04/10/2022	NSF	Sprouston Coronation Hall	£ 2,101.75	Generator Switch	Awarded
10	08/10/2022	NSF	Kelso In Bloom	£ 2,500.00	Perennials and Shrubs	Awarded
11	14/10/2022	NSF	Kelso Cricket Club	£ 2,160.00	Marquee	Awarded
12	03/11/22	NSF	Perfect Harmony	£ 1,350.00	Concerts	Assessed
13	30/11/22	NSF	QME Care	£ 2,250.00	Subsidised Food Provision	Assessed
14	01/12/22	NSF	Ancrum Community Council	£ 468.98	Ancrum Dog Signs	Assessed
15	05/12/22	NSF	Jedburgh Community Council	£ 1,215.00	Town Flower Maintenance	Assessed
16	07/12/22	NSF	KCC Walking Festival Committee	£ 5,000.00	Walking Group	Assessed
17	08/12/22	NSF	Kelso Heritage Society	£ 989.00	Capital AV Purchase	Assessed
18	09/12/22	NSF	Art at Ancrum	£ 540.00	Marketing Development	Assessed
19	11/12/22	NSF	Jedburgh Community Council	£ 4,027.50	Town Railing Painting	Assessed
20	11/12/22	NSF	Jedburgh Community Council	£ 2,569.95	Town Lamppost Painting	Assessed
21	12/12/22	NSF	Kelso Camera Club	£ 1,062.13	Photography Exhibition	Assessed
22	12/12/22	NSF	Rural Space Agency	£ 500.00	Creative Spaces	Assessed
23	13/12/2022	NSF	St Boswells PS	£ 1,159.00	Wildflower Development	Assessed
24	13/12/2022	NSF	Kelso Skatepark Project	£ 5,000.00	Skatepark Lights	Assessed
25	14/12/2022	NSF	Thomas Maconochie KHS Trust	£ 2,106.00	Stone Carving	Assessed
<b>Total</b>				<b>£ 51,692.99</b>		

[ ]



Last updated: 17/01/2023 - EH

This page is intentionally left blank



**SCOTTISH BORDERS COUNCIL  
CHEVIOT COMMUNITY FUND ASSESSMENT PANEL**

MINUTES of Meeting of CHEVIOT NEIGHBOURHOOD FUND ASSESSMENT PANEL held via Microsoft Teams on Wednesday the 11<sup>th</sup> of January 2023 at 7pm.

Present:- A. Carter;  
P. Jeary,  
G. Horsburgh;  
D. Weatherson;  
G. Hayward

In Attendance:- Community Co-ordinator (G Jardine),  
Community Engagement Officer (E. Husband)

Apologies:- B. Burton

**1. WELCOME AND INTRODUCTIONS**

Apologies were noted, G Jardine welcomed everyone to the meeting. Each member went around and introduced themselves to new CEO in post, E Husband.

**2. OUTCOME OF ASSESSMENT PANEL RECCOMENDATIONS TO CAP**

Following previous CAP meeting, all funding recommendations were supported, application limit was increased from £2,500 to £5,000 and the two application per group limit was removed. The removal of the £5,000 limit is to be reviewed at the March CAP meeting to assess the difference it makes.

Following the March meeting, the SBC team will pull together statistics and figures to display the overview of the Neighbourhood Support Fund for 22/23.

**3. ELECTION OF CHAIR OF CHEVIOT ASSESSMENT PANEL**

Following the resignation of the previous panel Chair, G Jardine welcomed members to volunteer to take the role as Chair

G Horsburgh made a nomination for D Weatherston as Chair

D Weatherston will stand as interim Chair until the end of the financial year

P Jeary will be leaving the panel following the next meeting.

G Jardine highlights the need for more members on the panel and SBC will work to introduce this to local groups.

**4. DECLARATIONS OF INTEREST**

G. Horsburgh – Declared interest in Kelso Community Council

D.Weatherson – Declared interest in Kelso Heritage Society

G. Hayward – Declared interest for Jedburgh Community Council.

There was a panel agreement that the declaration of interest should occur when the member has an interest in an application and must remove themselves from the conversation and will not score. An interested member can be asked questions regarding the project but cannot be involved in the discussion.

It was also agreed that if a panel member requires more information on an application, they will continue to score with this in mind.

## **5. PROJECT ASSESSMENTS**

### **A. OVERALL REVIEW OF MARKS**

The panel agreed, that given the volume of applications, any project with a mean score of over 80 would be recommended for approval. Projects which fell in this category were:

Kelso Walking Festival  
Jed Community Council – Perennial Plants Project  
Perfect Harmony  
Kelso Heritage Society  
St Boswell's PS  
Kelso High School  
Kelso Skatepark Project

**Further project discussion went as follows:**

### **B. PERFECT HARMONY**

An application for £1,350 was received from Perfect Harmony to provide an additional 5 concerts, per year, throughout Cheviot care facilities. These concerts engage local musicians with the purpose of enhancing the lives of the recipients.

**DECISION NOTED that:-** Perfect Harmony's application scored an average of 80+ in terms of their ability to deliver, clear evidence of need, potential impact, use of public money, innovation and sustainability and therefore is recommended the Cheviot Area Partnership awards a grant of £1,350.

### **C. QME CARE**

An application for £2,250 was received from QME Care to offer a subsidised meal during their Sunday Lunch Club as well as a contribution to resources for additional activities, e.g. music, games, crafts, group discussion and reminiscence, and cognitive stimulation, within their existing Place and Space Day Service.

Panel suggested that they should publicise their wish list, they very might be supported by the community.

**DECISION NOTED that:-** Following discussion and request of further information, there was consensus amongst the panel to recommend this application for funding.

The panel wanted to note that given this project will be a pilot, should the group which to continue beyond the pilot stage, and further funding is required, the panel would require a report on the operation and success of the pilot.

#### **D. ANCRUM COMMUNITY COUNCIL**

An application from Ancrum Community Council was received for the total of £468.98 to erect signage to encourage responsible dog ownership, and disallow dogs on the village green.

**DECISION NOTED that:-** A thorough panel discussion concluded that, as this signage would have no legal precedent, they would not recommend this project for funding.

The panel recommended that the group make use of SBC services to inform and educate the community, as well as lobby the Scottish Government to change legislation which would make it possible to erect such signage.

#### **E. JEDBURGH COMMUNITY COUNCIL**

An application for £1,215 was applied for from Jedburgh Community Council to replace all floral displays throughout the town with perennial plants to move to a more sustainable model and reduce the use of bedding plants.

**DECISION NOTED that:-** Jedburgh Community Council's application scored an average of 80+ in terms of their ability to deliver, clear evidence of need, potential impact, use of public money, innovation and sustainability and therefore is recommended the Cheviot Area Partnership awards a grant of £1,215

#### **F. KCC WALKING FESTIVAL COMMITTEE**

An application for £5,000 was applied for from Kelso Community Council's Walking Festival Committee to deliver the annual Scottish Borders Walking Festival, in September 2023. Funds will be used to support the rental of the community centre as well as the design, publication and marketing of event resources.

**DECISION NOTED that:-** Kelso Community Council's application scored an average of 80+ in terms of their ability to deliver, clear evidence of need, potential impact, use of public money, innovation and sustainability and therefore is recommended the Cheviot Area Partnership awards a grant of £5,000.

#### **G. KELSO HERITAGE SOCIETY**

An application for £989 was applied for from Kelso Heritage Society to support the purchase of updated software and equipment to be used throughout their programme of monthly talks of local and Scottish historical interest.

**DECISION NOTED that:-** Kelso Heritage Society's application scored an average of 80+ in terms of their ability to deliver, clear evidence of need, potential impact, use of public money, innovation and sustainability and therefore is recommended the Cheviot Area Partnership awards a grant of £989.

#### **H. ART AT ANCRUM**

An application for £540 was applied for from Art at Ancrum to support the annual arts fair located within the village of Ancrum. This fair supports artists and makers to display and sell

their work, drawing interest and tourism to the village. Funds will be used to produce a high-quality A3, colour catalogue for the event displaying information as well as a village map.

**DECISION NOTED that:-** Art at Ancrum's annual fair is an asset to the community, bringing publicity and tourism to the small village of Ancrum. The panel felt they produced a strong case in terms of their ability to deliver, clear evidence of need, potential impact, use of public money, innovation and sustainability and therefore is recommended the Cheviot Area Partnership awards a grant of £540.

*\*The following two applications were considered concurrently.*

#### **I. JEDBURGH COMMUNITY COUNCIL**

An application was received for £4,027.50 to support the painting of railings around the Play Park at the Bus Station location and in Abbey Place, which the Council felt gave a poor impression of the town.

#### **J. JEDBURGH COMMUNITY COUNCIL**

An application was received for £2569.95 to support painting of lampposts in Abbey Place, Jedburgh, which they also felt gave a poor impression of the town.

**DECISION NOTED that:-** The panel agreed that general upkeep to a town was not an appropriate use of the fund and they would not recommend this project for funding.

They added that perhaps if the application had demonstrated a community-led element to the project, that it would have been a stronger application for the fund.

#### **K. KELSO CAMERA CLUB**

An application was made for £1062.18 from Kelso Camera Club to host their annual exhibition. This exhibition is open to the public, free of charge and funds would be used to support the town hall hire, as well as the printing and mounting of the images.

**DECISION NOTED that:-** The panel was in agreement that this application produced a strong case in terms of their ability to deliver, clear evidence of need, potential impact, use of public money, innovation and sustainability and therefore is recommended the Cheviot Area Partnership awards a grant of £1062.18

#### **L. RURAL SPACE AGENCY**

An application was received for £500 to support Rural Space Agency, a newly established community group. Rural Space Agency, a soon to be established charitable organisation, aims to create cultural and creative activities throughout Jedburgh. Funds will be used to support the rental of a temporary space as well as art renewables and stationary for workshop delivery. Any approved funds will be delivered and accounted for by The Bridge as Rural Space Agency are in initial stages of establishment.

**DECISION NOTED that:-** Rural Space Agency present a strong case in terms of their ability to deliver, clear evidence of need, potential impact, use of public money, innovation and

sustainability and therefore is recommended the Cheviot Area Partnership awards a grant of £500.

#### **M. ST BOSWELLS PS**

A partnership application was received requesting £1,159 from St Boswells Primary School Parent & Friends Partnership and St Boswells Community Council sub-groups, Green St Boswells and Friends of the Community Woodland. This project aims to create a Community micro-orchard, a commemorative Queen's Green Canopy mini-woodland and associated wildlife areas around St Boswells Primary School grounds. The project aims to create community opportunities for learning and development surrounding wildlife and fruit.

**DECISION NOTED that:-** St Boswell's PS application scored an average of 80+ in terms of their ability to deliver, clear evidence of need, potential impact, use of public money, innovation and sustainability and therefore is recommended the Cheviot Area Partnership awards a grant of £1,159

#### **N. KELSO SKATEPARK PROJECT**

An application was received for £5,000 from the Kelso Skatepark Project to support consultancy fees for the improvement of safety, security and lighting to the Skatepark.

**DECISION NOTED that:-** Kelso Skatepark Project's application scored an average of 80+ in terms of their ability to deliver, clear evidence of need, potential impact, use of public money, innovation and sustainability and therefore is recommended the Cheviot Area Partnership awards a grant of £5,000

#### **O. THOMAS MACONOCHIE KHS TRUST**

Application was received for £2,106 from the Thomas Maconochie KHS Trust, in partnership with CLD Service to run an intergenerational project between the residents of Kerfield Court and pupils from the High School. The group will work with a stone carver to produce sculptures that will be placed within the residents' garden at Kerfield Court.

**DECISION NOTED that:-** Thomas Maconochie KHS Trust application scored an average of 80+ in terms of their ability to deliver, clear evidence of need, potential impact, use of public money, innovation and sustainability and therefore is recommended the Cheviot Area Partnership awards a grant of £2,106.

#### **P. CONDITIONS OF FUNDING AND EVALUATION REQUIREMENTS**

No additional conditions of funding were required

#### **6. REVIEW OF FUNDING AVAILABLE AND CLOSING DATE FOR NEXT FUNDING ROUND**

Closing date for applications is Wednesday 22<sup>nd</sup> February

#### **7. DECISIONS AND REPORT TO AREA PARTNERSHIP**

#### **8. DATE OF NEXT MEETING**

The next Cheviot Assessment Panel will take place on the 7<sup>th</sup> of March following the closure of applications on the 22<sup>nd</sup> of February, in advance of the Cheviot Area Partnership Meeting on the 29<sup>th</sup> of March.

Signed:

Dean Weatherston

Chair of Cheviot Neighbourhood Support Fund Assessment Panel

# Jedburgh Borderlands Place Workshop 1

## Summary Note

### What makes Jedburgh great?

*“A sense of place and time”*

Jedburgh is the Historic gateway to the Borders. And Scotland. Our rich heritage makes it unique, with Mary Queen of Scots, the Abbey, the Castle Jail. And Jedhart Pears. We have a sense of place and time.

We are an active, vibrant and committed community. Our people are passionate and take pride in being part of Jedburgh. People are warm. Welcoming, and supportive of each other. It's a friendly town, a great place for families.

We value the situation of the town, the natural environment, the river, the hills and lots of green space in the town. And, Jedburgh has the amenities that people need. And we value our independent high street with lots of coffee shops. People here are aware of where their food comes from with local green grocers, bakers and butchers. This, and good road transport make Jedburgh a destination town, a stopping point for day time tourism.

### What are the key issues?

*“Our community is stagnant”*

We see the out migration of young people. We lack access to opportunities, further education and night classes. And jobs with reasonable pay. The new campus is isolated, and there is a gap in service provision for some community groups, including young people. Families are affected by poverty. Housing is expensive. There are too many vacant properties, and absentee land lords.

We feel we have to fight for everything, that other Border towns have had more investment. Many activities in Jedburgh are reliant on volunteers. And, our community organisations are at capacity. We need “ownership” of spaces and more representation of young people in decision making, and more places to meet for community activity, intergenerational mixing and cohesion. But, we also need more communication, to know what is happening, and what we can do.

Facilities aren't adequate, accessible or affordable. The Medical practice is under pressure. Appointments are not always available. We want face to face meetings in our health centres.

We feel the town centre is dilapidated. Assets are not maximised. The library closed. Development of the old school is delayed. Flooding of the 'Jed' is a concern, as are the state of the roads and pavements which makes it difficult to navigate with wheelchairs or buggies. Public transport isn't reliable. There isn't much of an active travel network, and there are a lack of shopping options.

We need to balance our domestic, agricultural, environmental and tourist needs. It is difficult to walk dogs beside agricultural land. We need gentle walking routes as well as trails. But, we also need more hospitality venues, places for tourists in the town.

Jedburgh is easy to bypass! We seem to lack opportunities for creativity. There are virtually zero facilities for culture, creativity or the arts. We need a cultural hub, and investment in legacy businesses and tourist attractions.

*“We need to collaborate to get more people to stop and stay”*

## **What does success look like?**

*“A sense of purpose, built on trust, and community ownership”*

We want to create a confident, supportive community network, involving all members of the community, where people have more responsibility and sense of purpose, built on trust, and community ownership. We want a range of voices represented, using groups already out there, connecting with young people. And empowering our community.

*“Let’s build on the value our natural assets”*

Success the, is about maximising our assets, and utilising our heritage buildings in a sustainable way. We can be both economic, and green, and use this to create a vibrant high street, a place with a ‘buzz’, shopfronts regenerated, and shops filled, with more footfall and returning visitors. And more businesses attracted to the town.

Let’s improve the river banks, and make more of river activities and renewables. We have fantastic opportunities for a net zero town. Develop sustainable green transport, and any time, anywhere connectivity, physical and digital. Create more paths for horses and bikes, and more recreation options for young people, led by young people, building on the success of the skatepark. And, let’s develop more recreation in the Old Jed forest, making more of walking paths and old connections. Create more allotments. Support community food growing with more orchards, and a circular economy where the food we grow is served in the cafes we have in the town. We want to be the food capital of the Borders.

*“A vibrant high street “buzz”*

The success and sustainability of existing and new businesses are the reasons we want people to come here, live, here, stay here. Our future has a mix of jobs with fair work at the heart of all opportunities, and more decent and affordable housing for local people. Our town centre is a hub, with great places to meet. It is inclusive, vibrant, supportive, a place of advice and learning.

Let’s build on our ambition and collaborate to create more activities and events that encourage people to visit the town, and stay in the town. Entice people to stop with creative place making. Sort out the entry to the town. Develop evening night life. Provide varied and characterful accommodation. And make the most of the rugby club, a vital part of Jed. But, lets also build. Let’s build Jedburgh as a cultural hub, a place for artists to work and engage with community, a destination of choice and culture.

## **What skills do we need?**

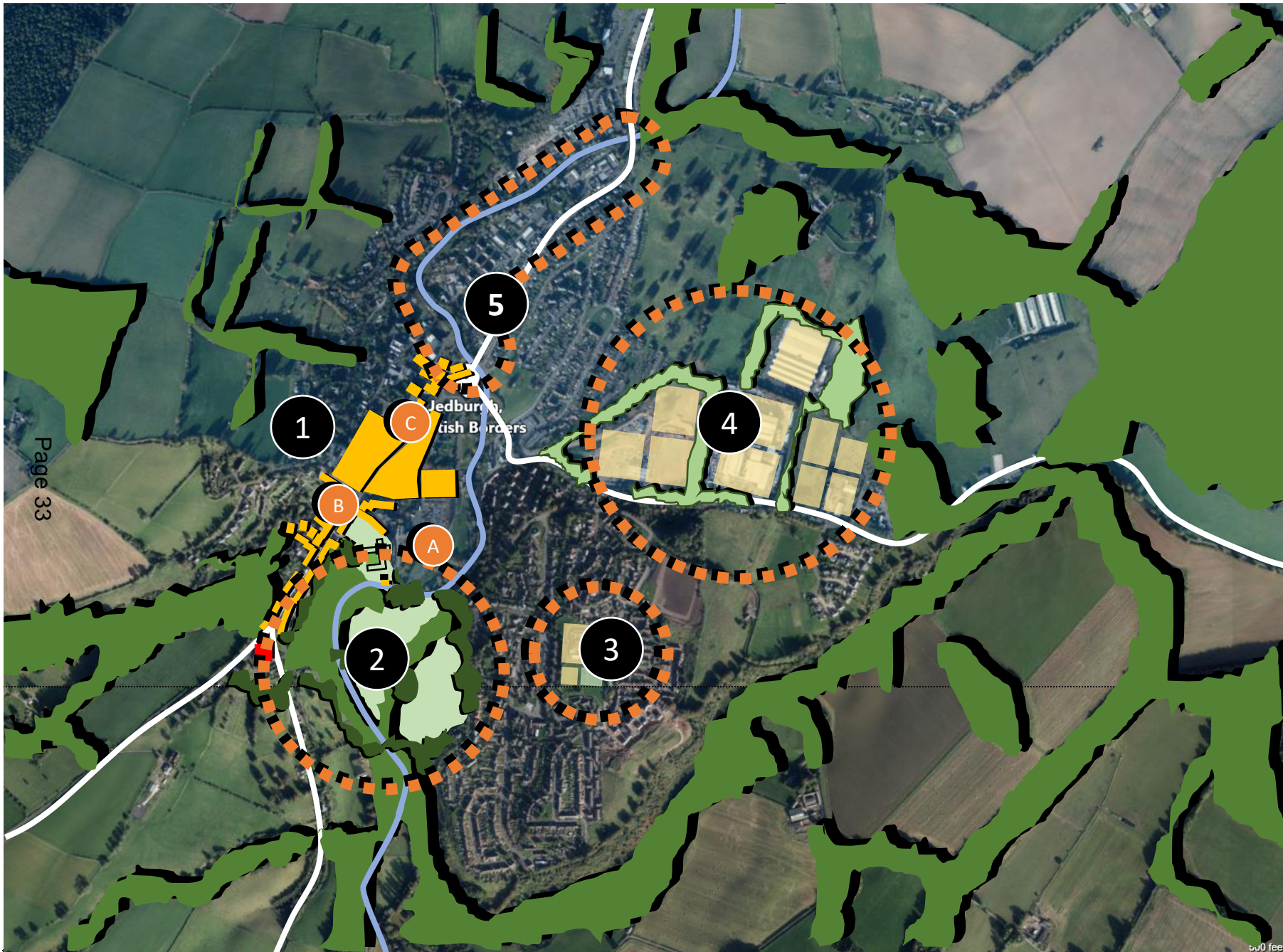
We need to develop our engagement skills. We want our plans and visioning to be welcoming to youth, parents, older people. We also want our groups to be relatable and interest will grow interest. We need to have more family days – not always a meeting, and not be too bureaucratic. We want to be inclusive, to show progress and see action.

So, we need to align priorities, bring things together, and Create a joined up plan so we’re all working on the same thing. This needs good communication, so we can build a shared vision that everyone can get behind.

Let’s build great Town Team collaboration with a tracked plan, and make the best of groups already out there to create better opportunities together. Let’s create spaces and opportunities Space to come together, space to share.

*“an understanding of what others can bring to the table”*





# Jedburgh

## Placemaking Summary Diagram

- 1 Town Centre Regeneration**
    - *Public realm, public art, night time economy, active travel*
  - 2 Gateway landscape**
    - *Improve greenspace enhancing historic assets at town approach*
  - 3 Housing infill**
    - *Re-development of former high school*
  - 4 Mixed use regeneration**
    - *Mixed scale business and enterprise development*
  - 5 River regeneration**
    - *Amenity, active travel, Wool mills, farm food hub, regeneration of mixed retail zone*
- A. *Town Hall upgrade*  
 B. *Creative Hub on library site*  
 C. *Outdoor hub*

# Jedburgh

## Placemaking Summary Diagram



1. Town Centre Regeneration
2. Gateway landscape
3. Housing infill
4. Mixed use regeneration
5. River regeneration
6. Town Hall Upgrade
7. Creative Hub
8. Outdoor hub
9. Active travel links
10. Public art across town

# A Plan for Jedburgh

## Borderlands Place Programme

### Workshop

3<sup>rd</sup> November 2022

Page 35



[www.ourplace.scot](http://www.ourplace.scot)



[www.borderlandsgrowth.com](http://www.borderlandsgrowth.com)



# Workshop Overview

Page 36

<b>Welcome &amp; Introduction (15 mins)</b>	Outline of the Borderlands Place Programme and the Borders-wide place making approach through joint working with communities
<b>Shared ambitions (30 mins)</b>	What are the big issues here? What does success look like working together to tackle those issues? What are our shared priorities moving forward?
<b>Real Opportunities (40 mins)</b>	Discussion of how to make the best of what already exists, what's planned, what is needed, and what is possible through more and better joined-up working?
<b>Organising for impact (25 mins)</b>	What resources do we have, and what resources do we need to deliver on the opportunities for the town? How do we organise ourselves as a Town Team to deliver?
<b>Close (5 mins)</b>	Overview of the discussion and next steps

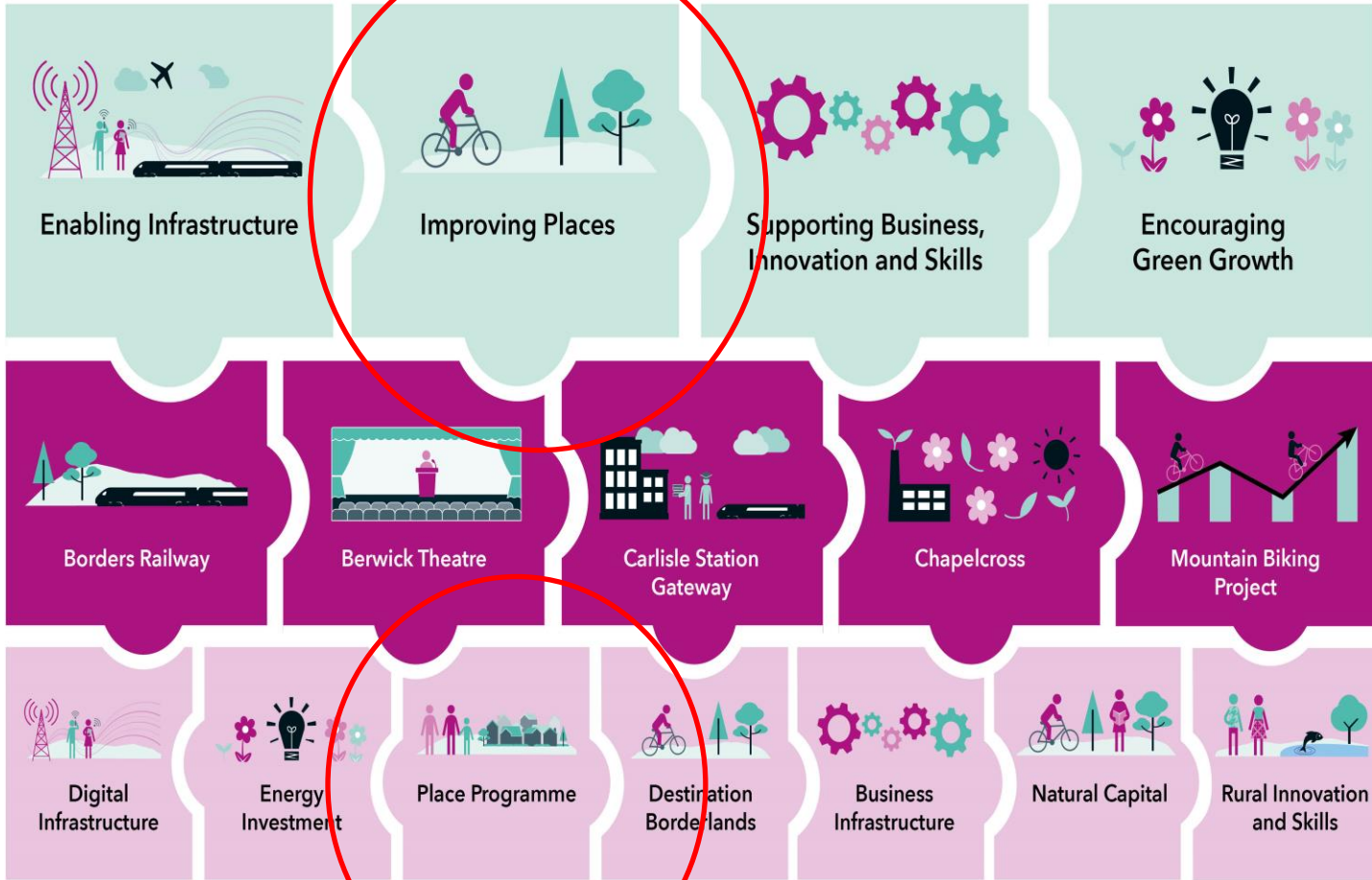


# Context

- **Place**
  - National Policies
  - Legislation
  - Funding Programmes
  - Community Resilience
- **Borders-Wide Place Programme**
  - Developed with Area Partnerships
  - Interest from c.40 Communities
- **Borderlands Inclusive Growth Deal**



# Borderlands Inclusive Growth Deal



# Borderland Place Programme

- UK & Scottish Government/5 Council Areas
- Place Programme - 4 Target Towns
- £7.25m over 7 years (24/25 - 30/31)
- Town Plans & Town Investment Plan
- Guidance/Eligibility Criteria
- Governance
- Working with the Grain



# Eligible Interventions

- Purchase and assembly of land and buildings.
- Remediation of vacant and derelict sites.
- Property development and enhancement, including schemes to encourage private, public and third sector investment in improving buildings, re-modelling business premises, and conversion of buildings to new uses to support the repurposing of towns (e.g. residential, leisure, community uses).
- Development of arts and cultural, visitor economy, community, and skills and education facilities.
- Enhancement of shop, business and commercial public facing fronts.
- Development of the upper floors of buildings for affordable housing and other uses.







Led by the Community

Involving Everyone

Shared Ambitions

Better Places To Live

Joining Things Up

Town Plan

Redesigning Public Services

Enlisting Support

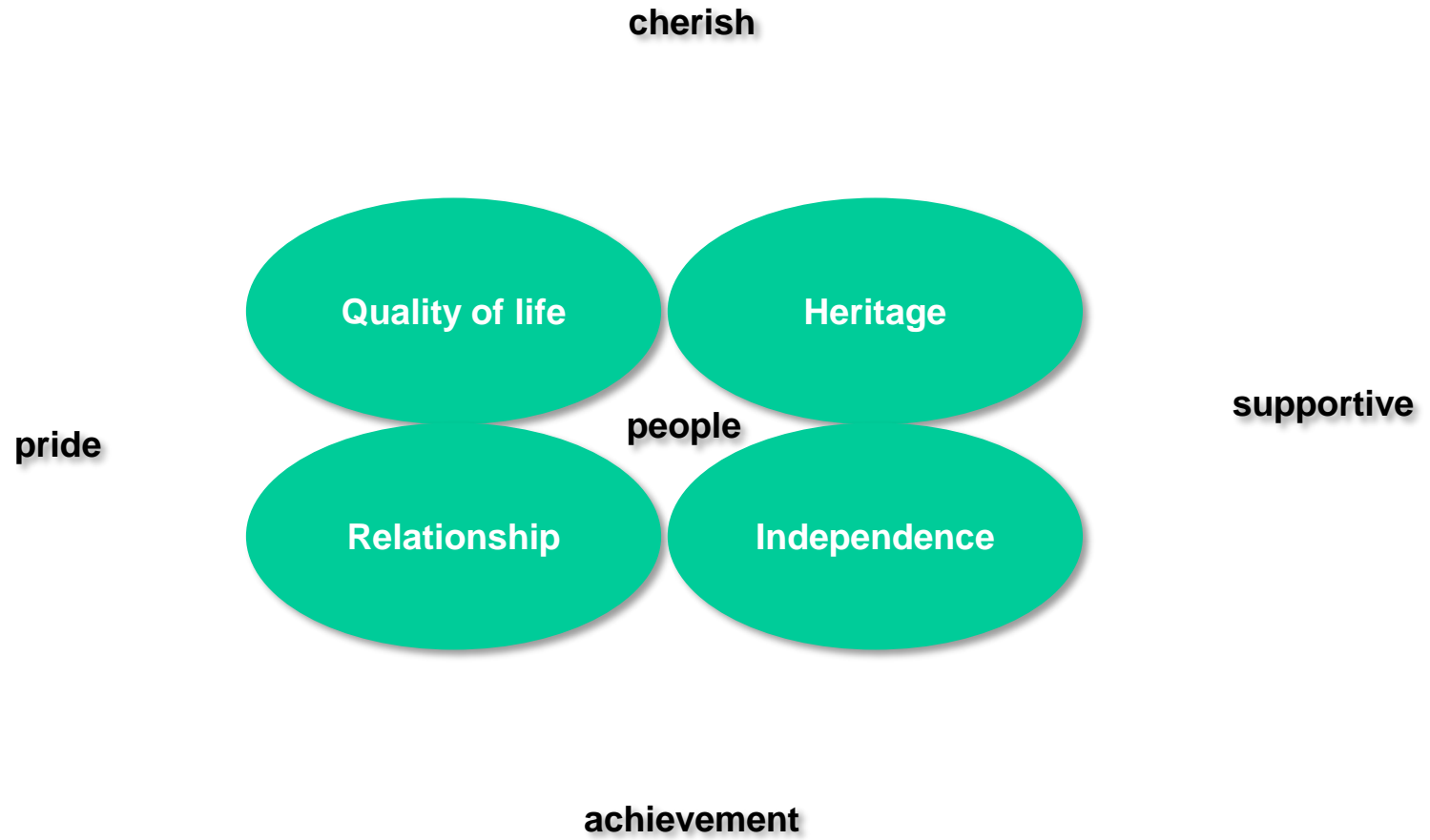
Prioritisation

One Plan For The Town

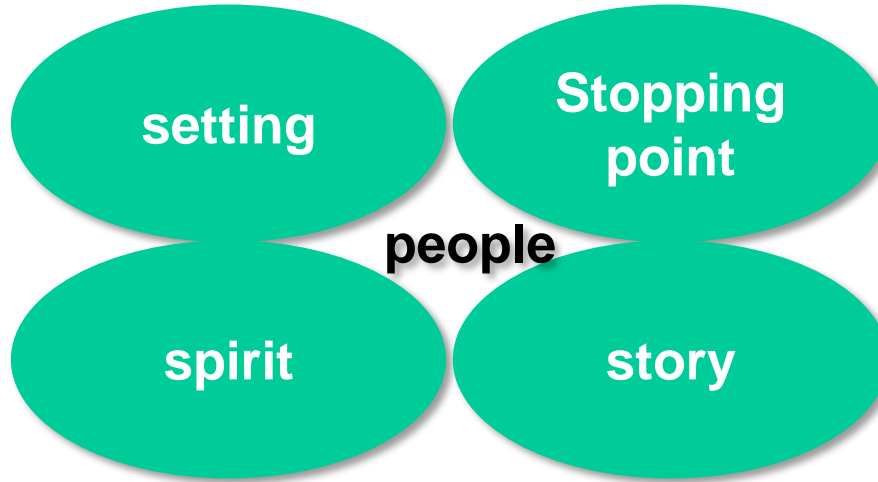
Funding & Investment

Making Best Use of Resources





**learning**



**family**

**passion**

**friendly**

## **Different positive destination choices**

**Highers?**

**Job choices, part  
time, full time**

**Different positive  
destination choices**

**Highers?**

**Job choices, part  
time, full time**

**Connectivity &  
reliability**

**Retail,  
expense,  
competition**

**Access/  
presence of  
services**

**Communication  
about what's  
happening**

**Different positive  
destination choices**

**Highers?**

**Job choices, part  
time, full time**

**Connectivity &  
reliability**

**Livestock,  
dogs, uses**

**Retail,  
expense,  
competition**

**Restaurants,  
destination  
uses**

**Access/  
presence of  
services**

**Creative,  
culture**

**Communication  
about what's  
happening**

**Different positive  
destination choices**

**Highers?**

**Job choices, part  
time, full time**

**Connectivity &  
reliability**

**Livestock,  
dogs, uses**

**poverty**

**Restaurants,  
destination  
uses**

**Retail,  
expense,  
competition**

**Access/  
presence of  
services**

**Creative,  
culture**

**Communication  
about what's  
happening**

**Housing**

**Sustainable  
places**

**Community  
wealth**

**Heritage  
buildings used**

**Sustainable  
businesses**

**Valued  
workforce**

**Fair work**

**Local people, local  
housing**

**OWNING SUCCESS  
CONNECTING  
OPPORTUNITIES**

**Destination of  
choice**

**Community  
ownership**

**Everyone  
included**

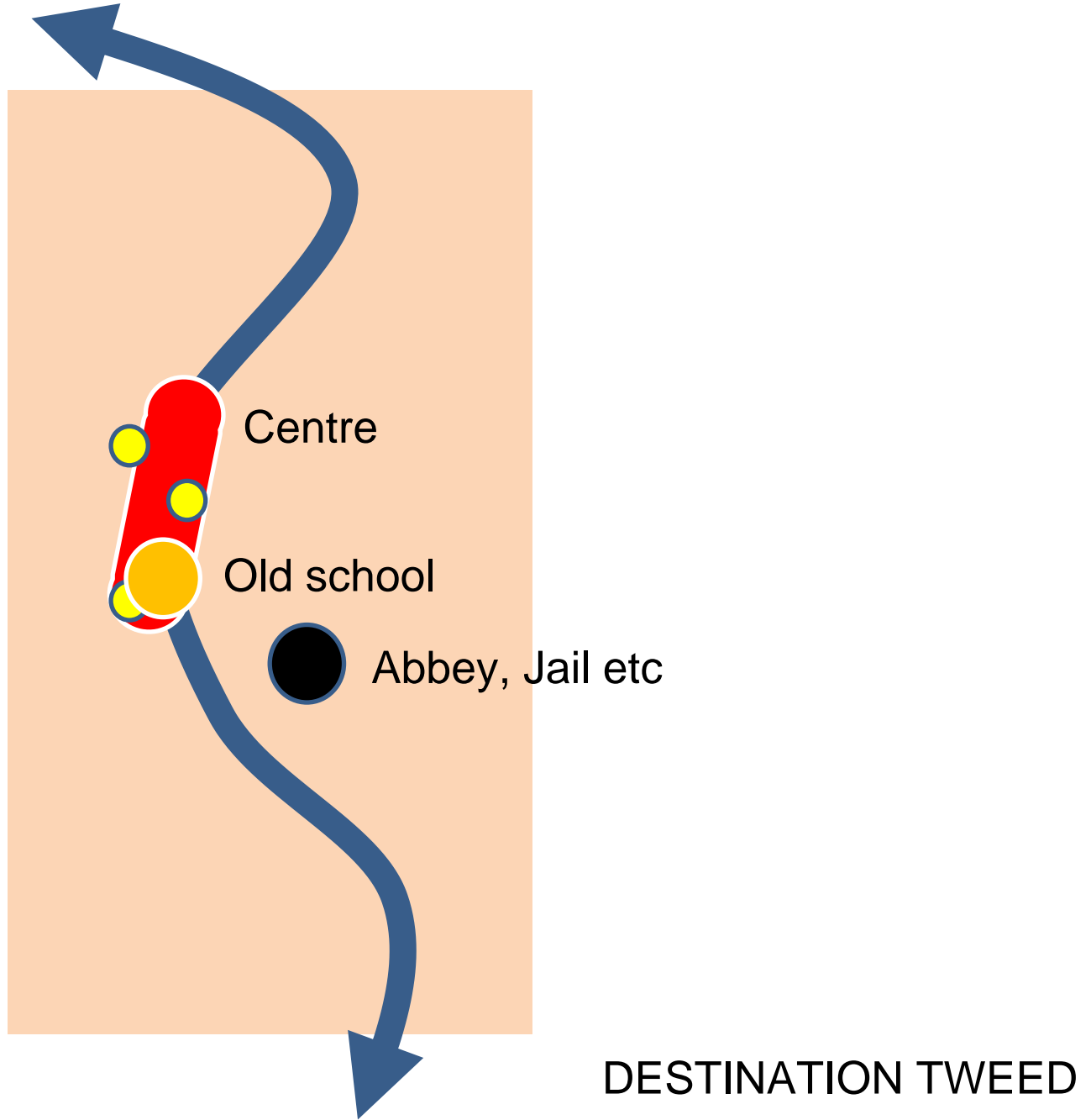
**Supportive  
community**

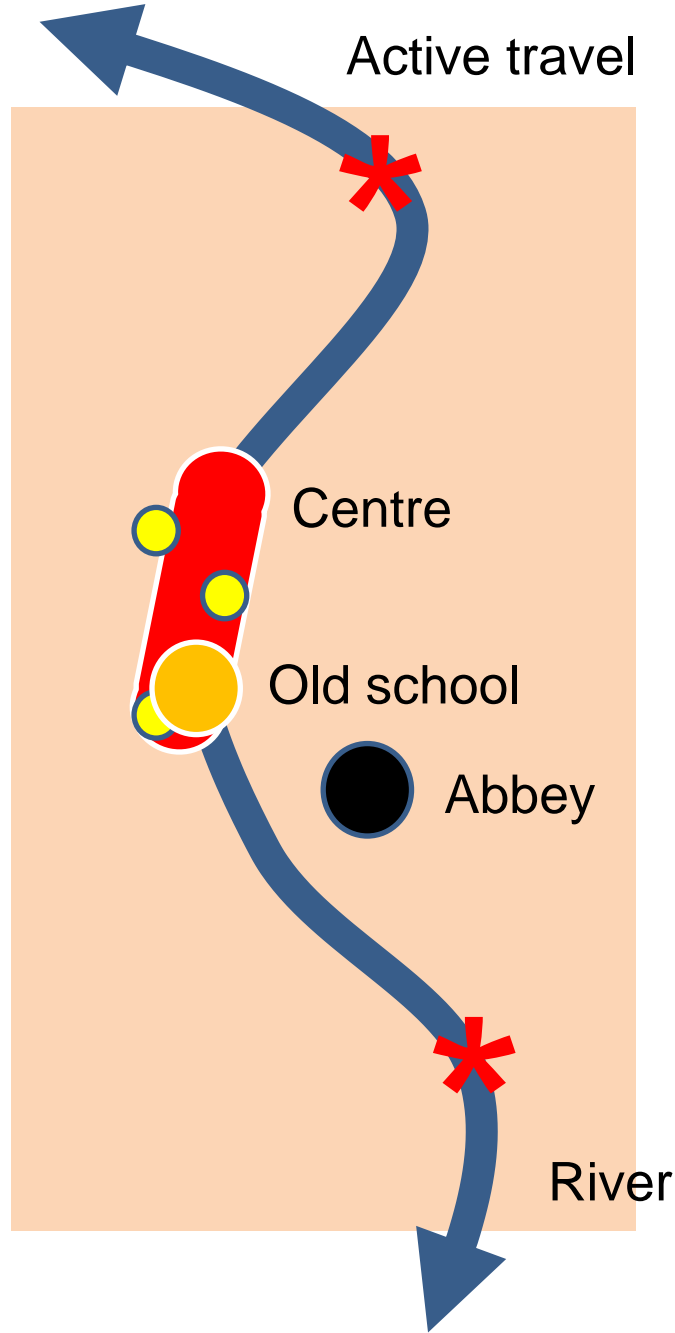
**Connect the  
school**

**Connect to  
jobs in 20 mins**

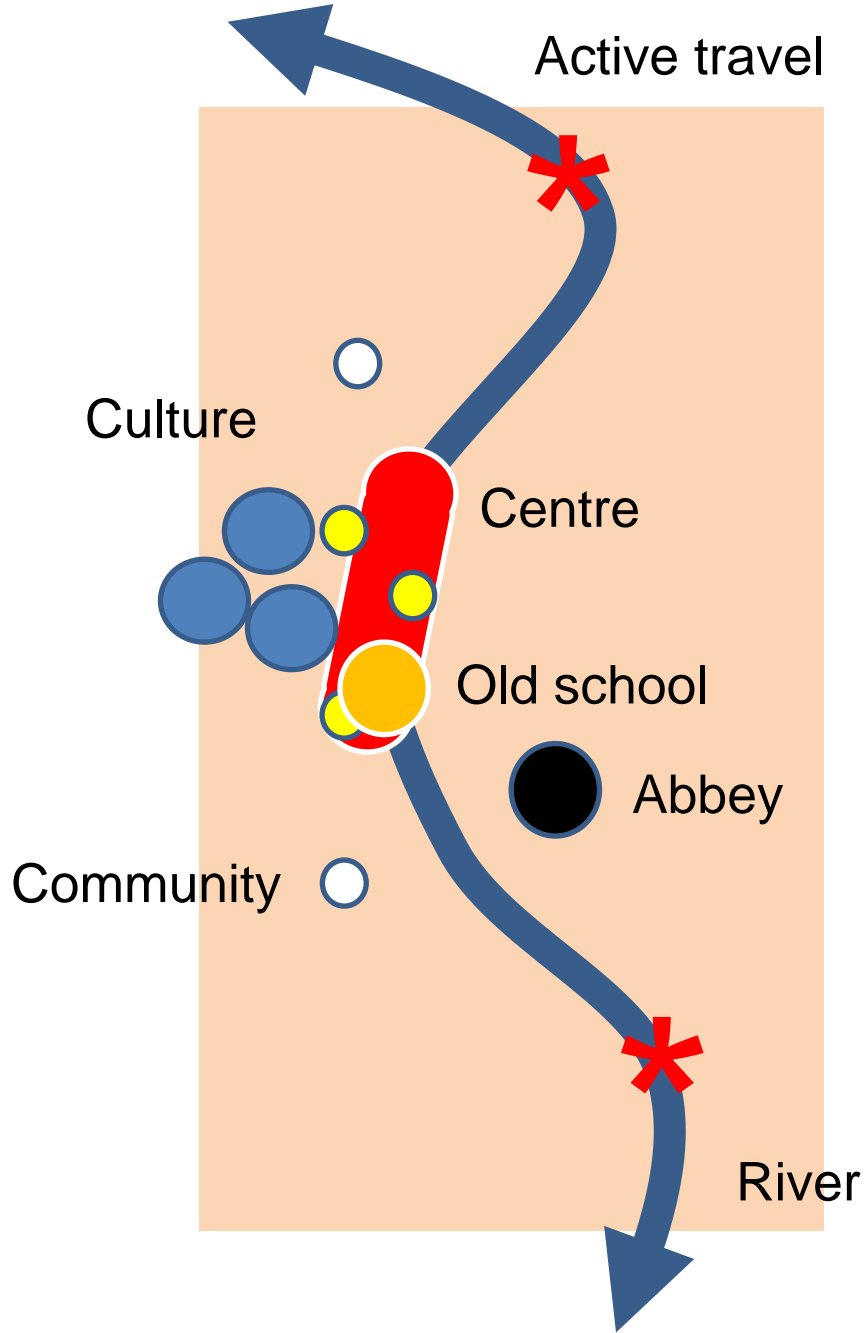
**Vibrant town  
centre**



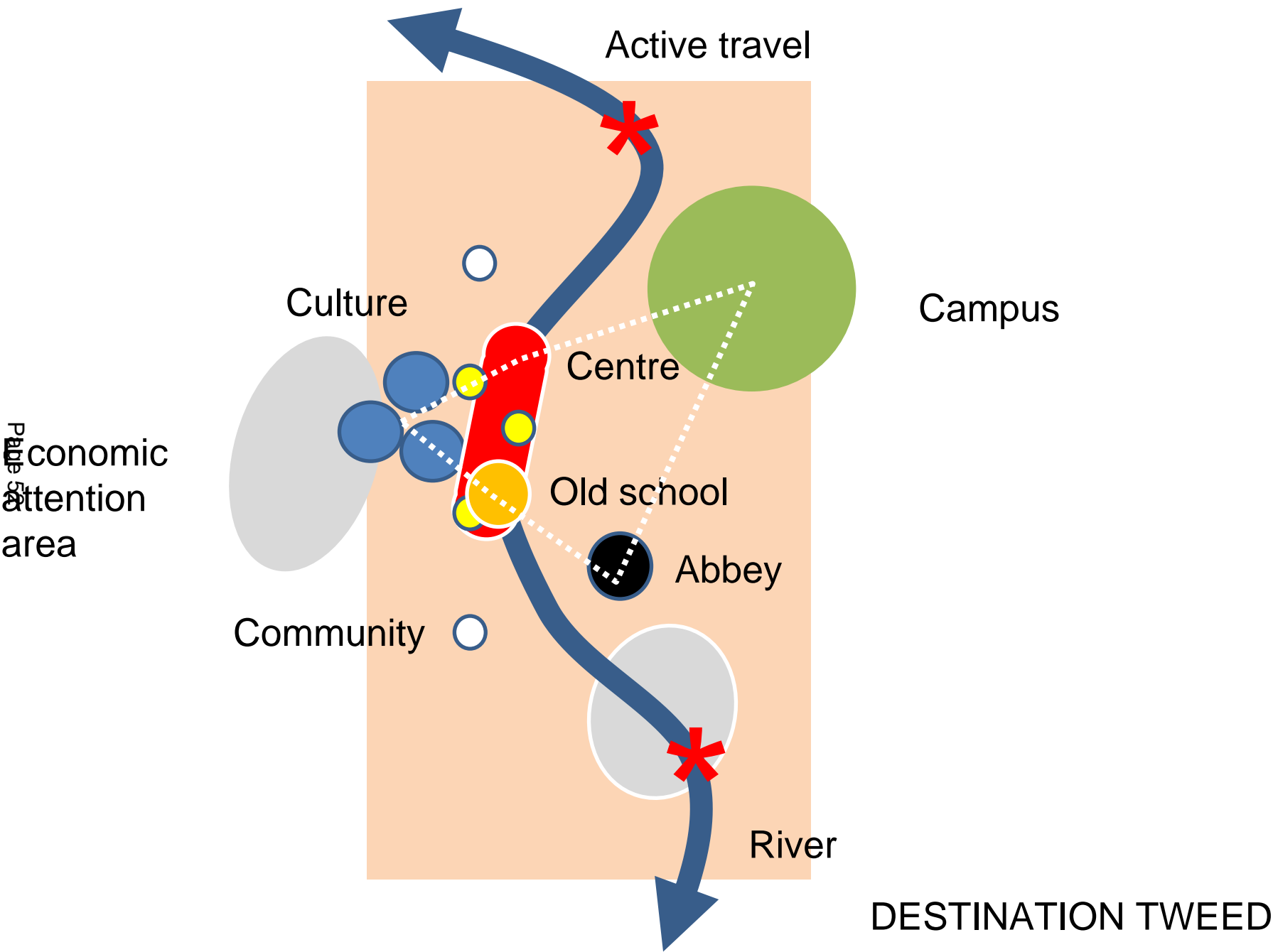




DESTINATION TWEED



DESTINATION TWEED



Bring people together

Shaping Ideas

Business Planning

Connecting the dots

Design

Development

Management



*Communicating*

*Connecting*

*Convening*

Getting started

Getting focused

**TOWN  
TEAM**

Getting it to happen

Getting the plan

*Collaborating*

*Help when we don't know what we don't know*

*Mentor*  
Page 55

*Partner*

**university**

**Appreciate  
assets**

**Retention,  
reasons to  
come back**

**Town centre,  
state of  
buildings**

**Reluctance to  
change**

**silos**

**confidence**

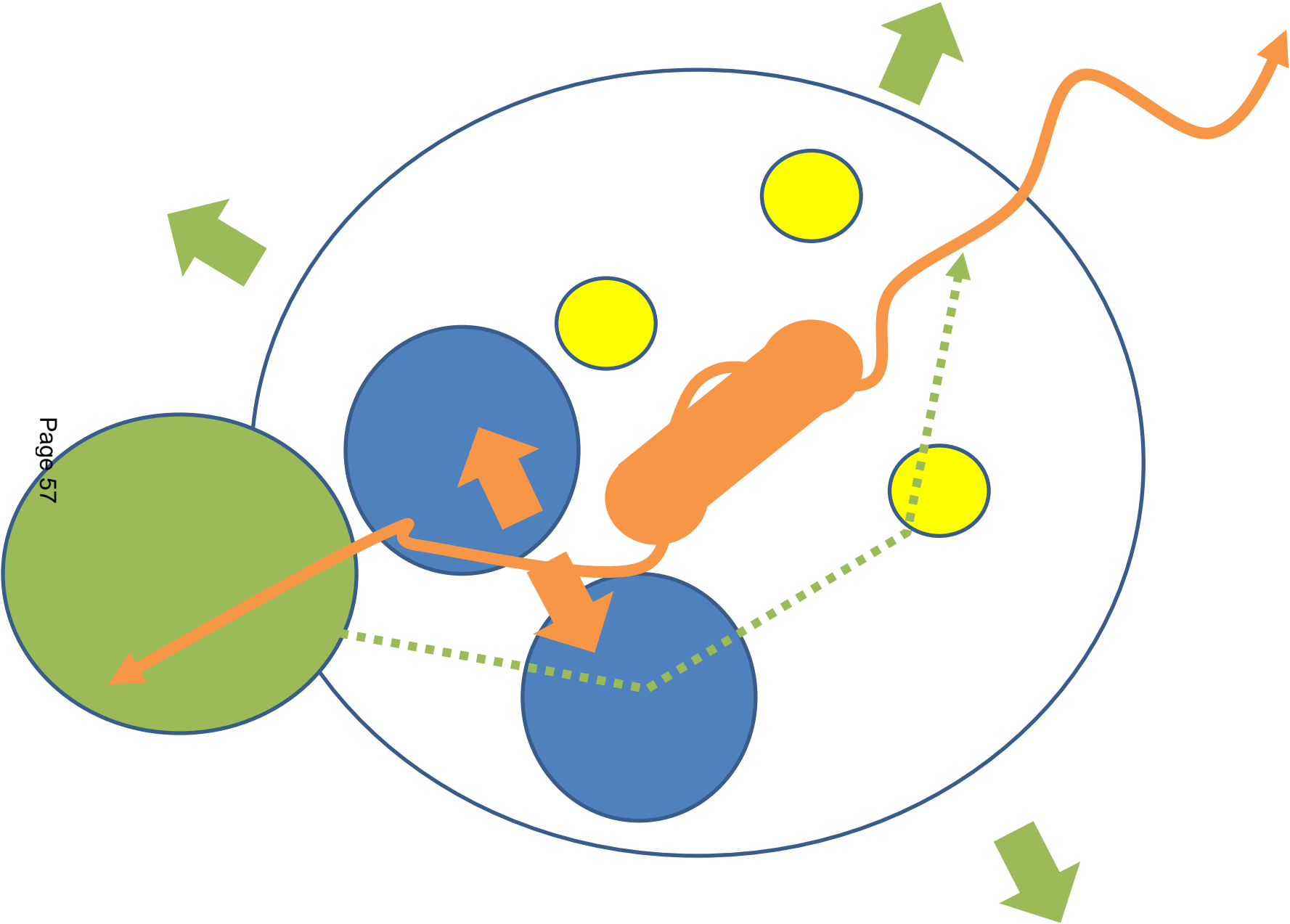
**Depth and  
range of  
opportunity**

**Widen  
opportunity of  
investment**

**Skills to do,  
change**

**accessibility**





This page is intentionally left blank

# Borderlands Place Programme Town Teams

## Summary Note

At the Borderlands Place Programme workshop in November we agreed that our next step was to focus on what a Town Team might look like for Jedburgh and circulate some thoughts on this ahead of the next workshop which will look at this in more detail early in the new year.

To recap, the Borderlands Inclusive Growth Deal Place Programme is a 7-year investment fund starting in 2024/25 and focuses on supporting communities to develop and deliver a single vision and community-led Place Plan.

### ***What is a Place Plan?***

A Place Plan describes an overarching strategy for a Town and covers a period of 10 – 20 years. Each place will have different people, preoccupations and priorities. This means different places will need different types of investments to support opportunities for people to live well locally. This will build on the conversations from the first round of workshops, and continue to consider what is currently great about Jedburgh, what it needs to make it a better place, define what a brighter future looks like from a whole-town perspective and refine and capture that in an action plan for investment. The first step for communities in developing a Place Plan is to form a **Town Team**.

### ***What is a Town Team?***

A Town Team is a representative community-led steering group that oversees and drives the development of a Place Plan. It is an independent community-led group which represents the voices and interests of all local residents, businesses and communities who work collaboratively with local and regional government agencies.

### ***What are the characteristics of a Town Team?***

- Representative – *of the diversity of the Jedburgh community*
- Inclusive – *everyone is welcome and there are no bad ideas*
- Works collaboratively – *listens, joins things together and seeks out suitable partners*

The make-up of the Town Team is at the discretion of the community, but in other areas has included representation from Community Councils, Elected members, Development Trusts, Key Local Groups, Voluntary Organisations, Private Sector, Schools, Further Education – really, anyone with stake in the betterment in their community.

The main thing is that the Town Team is a representative steering group to oversee the development of the Place Plan, and drive the process with effective engagement in their community so that all voices are heard.

### ***What support is available to the Town Team?***

Officers from Scottish Borders Council, Community Planning Partnership, South of Scotland Enterprise and Borders Third Sector Interface will be available to assist each of the Town Teams, to provide operational support and advice to the volunteers. Funding will be available to support Town Teams in the development of their Place plans. Town Teams will be able to access consultancy support through the Place Making Consultancy framework (due to go live January 2023). This has been developed with community participants to provide experienced people to build capacity and support Town Teams in the development of their Place Plans. This will be funded through the UK Shared Prosperity fund, and enables the Town Team to choose a partner suited to help deliver the ambitions for their community.

## Examples of Town Teams

Town Team Example	Web Links to resources
<p><b>Scotland: Neilston Town Team</b> Neilston is a village in East Renfrewshire. The Development Trust, and a network of community groups, together with the Local Authority and community planning partners formed the Neilston Town Team, which worked together to shape a vision and investment plan for the future of the village. The work was recognised in national awards for community engagement.</p>	<p><a href="#">Neilston Town team Charter</a></p> <p><a href="#">Town Team Video</a></p>
<p><b>Yorkshire, UK: Selby Urban Renaissance</b> The Yorkshire Urban Renaissance was a Regional Economic Development programme focused on regenerating towns. The programme was supported by a network of Town Teams, who agreed to work together, confirming the commitment to collaborate in a 'Charter', which informed masterplans, investment plans and implementation strategies.</p>	<p><a href="#">Selby District Renaissance</a></p>
<p><b>Borderlands: Dalton Town Team</b> Dalton is a town in Cumbria and part of the Borderlands Programme. A Town Team helped shaped the Place Plan for the town. The Plan sets out who is on the Town Team, how they worked and how the Team shaped the plan proposals.</p>	<p><a href="#">Dalton Place Plan</a></p>
<p><b>USA: The Town Team Movement</b> The Town Teams movement is a social enterprise, based in USA, supporting communities lead change. The Movement has built a resource of tools and tips on Town Teams, how they form, what they do, and examples of Town Team led projects.</p>	<p><a href="#">Town Team Movement</a></p> <p><a href="#">Town Team Movement example place plan</a></p>
<p><b>UK: Cricklewood Town Team</b> Following the Mary Portas review of town centres, UK Government funded a network of Town Teams to shape local priorities for change. The Cricklewood Town Team was established initially by a group leading on Homelessness and over time, has built a team around all voices, faiths and partners in the community to focus on actions to improve life in the place.</p>	<p><a href="#">Cricklewood Town Team</a></p>
<p><b>Ireland: Co-designing neighbourhood change, Dublin</b> Working with a network of local communities, activists and partners, Dublin City Council facilitated a Town Team model for an urban neighbourhood. This built on the work of the community led Community Assistance Team [CAT] of the American Institute of Architects. The process and output of this approach to co-design are captured in this report.</p>	<p><a href="#">Dublin Framework Pilot</a></p>
<p><b>Ireland: Wicklow Town Team</b> Wicklow is a town south of Dublin, a large rural town serving local communities but also a key place within the wider city region. To support the regeneration and economic development of the town to serve community needs a Town Team was formed, shaping a plan for investment and collaboration for the future of the place.</p>	<p><a href="#">Wicklow Town Team</a></p>

## **Additional Information**

### **Current consultations**

#### **Place Making and Community Engagement Sign Up**

The way we are engaging with our residents is changing - and we want you to have your say

Place making is a process of community engagement where the opinions and desires of the community are used to inform the future of the places we live, work and play - and by getting involved and telling us what matters to you, we can make sure the voices of all Scottish Borders residents are heard.

Sign up to receive updates from Scottish Borders Council on community engagement events in your areas, to find out about active consultations, funding opportunities, and who to contact when you have an amazing idea to benefit your neighbourhood.

[Have Your Say - Place making and Community Engagement Sign Up - Scottish Borders Council - Citizen Space](#)

#### **SBC 2023/24 Budget Survey**

Borders residents are being urged by cross-party politicians to complete a new survey and help shape the next Council budget, due to be set in February 2023.

The survey also provides Borderers with the opportunity to provide feedback on a number of other areas, including public transport, health and social care and the development of local plans within communities.

Closes 31 January 2023

[2023/24 Budget survey - Scottish Borders Council - Citizen Space](#)

---

### **Food Conversation**

The last meeting of the Food Conversation group took place on Friday 18<sup>th</sup> November. The meeting continued the discussions and planning for responding to the impact the cost of living crisis is having on food access as well as longer term strategies to support food growing and food access.

---

### **Community Choices**

The e-learning module is now available for SBC staff to complete. It is designed to increase knowledge, understanding and awareness of how departments within SBC can work with the community to make decisions on budget spend.

---

### **Community Empowerment:**

Currently, there are no formal Participation Requests being considered within the Cheviot area. SBC is currently working with and advising groups on requests for 5 asset transfer requests.

For information about the Community Empowerment (Scotland) Act 2015: [Parts of the Act | Community Empowerment \(Scotland\) Act 2015 | Scottish Borders Council \(scotborders.gov.uk\)](#)

### **Place Making**

A place based approach is about understanding the potential of a place and coordinating action to improve outcomes, with community participation at the heart of the process. For information, tools and resources on place based approaches visit [Our Place](#)

### **Area Partnerships' information pack:**

[Cheviot Area Partnership | Scottish Borders Council \(scotborders.gov.uk\)](#)

[Community engagement, planning and ownership | Area Partnership information pack | Scottish Borders Council \(scotborders.gov.uk\)](#)

### **Community Councils:**

Scottish Community Councils Latest News, including information about funding opportunities and national consultations:

[Community Council News](#)

### **Scottish Borders Council Meetings**

[Browse meetings - Scottish Borders Council - Scottish Borders Council \(modern.gov.co.uk\)](#)

### **Cost of Living Support**

[Financial support and advice | Cost of Living Crisis support | Scottish Borders Council \(scotborders.gov.uk\)](#)

### **Debt Advice:**

[Citizens Advice Bureau](#)



Download the NHS  
Borders Money Worries  
App here

NHS Money Worries App – download from Google Play or the App Store

**Covid-19 vaccination programme**

<https://www.nhsborders.scot.nhs.uk/patients-and-visitors/covid-19-vaccination-programme/>

**NHS Borders website for current updates:**

<http://www.nhsborders.scot.nhs.uk/patients-and-visitors/coronavirus/>

**Business support**

<https://www.scotborders.gov.uk/covid19business>

<https://findbusinesssupport.gov.scot/>

**General Funding:**

<https://fundingscotland.com/>

<https://www.tnlcommunityfund.org.uk/>

[Community grants and funding | Scottish Borders Council \(scotborders.gov.uk\)](#)

[Neighbourhood Support Fund | Scottish Borders Council \(scotborders.gov.uk\)](#)

[SBC Enhancement & Welfare Trust](#)

**NHS Borders Wellbeing Service:**

<http://www.nhsborders.scot.nhs.uk/patients-and-visitors/our-services/general-services/wellbeing-service/>

**NHS Borders Wellbeing Point:**

[www.nhsborders.scot.nhs.uk/wellbeingpoint](http://www.nhsborders.scot.nhs.uk/wellbeingpoint)

<https://www.rcot.co.uk/conserving-energy>

This includes pacing, fatigue management and some ideas about restarting gentle exercise

<https://www.yourcovidrecovery.nhs.uk/>

This covers most aspects, including information from physiotherapy and occupational therapy websites

<https://www.chss.org.uk/advice-line-nurses/>

Phone or email to access their support/advi